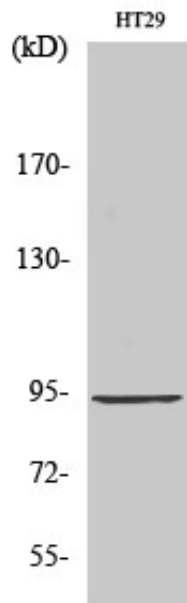


StIp1 Polyclonal Antibody

Catalog_no :	AT4459
Applications :	WB,ELISA
Reactivity :	Human
Category :	抗原抗体
Size :	100µg/50µg/20µg
Gene_name :	ELP2
Protein_name :	Elongator complex protein 2
Humangene_id :	55250
Humanswissprot_no :	Q6IA86
Immunogen :	The antiserum was produced against synthesized peptide derived from human ELP2. AA range:771-820
Specificity :	StIp1 Polyclonal Antibody detects endogenous levels of StIp1 protein.
Formulation :	Liquid in PBS containing 50% glycerol, 0.5% BSA and 0.02% sodium azide.
Source :	Rabbit
Dilution :	Western Blot: 1/500 - 1/2000. ELISA: 1/10000. Not yet tested in other applications.
Purification :	The antibody was affinity-purified from rabbit antiserum by affinity-chromatography using epitope-specific immunogen.
Concentration :	1 mg/ml
Storage_stability :	-20°C/1 year
Msds :	MSDS_Antibody.pdf
Other_name :	ELP2; STATIP1; Elongator complex protein 2; ELP2; SHINC-2; STAT3-interacting protein 1; StIP1
Molecular Weight :	93KD

Product Images



Western Blot analysis of various cells using StIp1 Polyclonal Antibody