



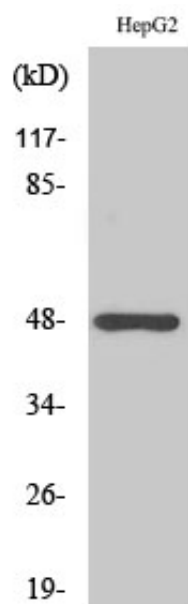
Strad Polyclonal Antibody

Catalog_no :	AT4464
Applications :	WB,IHC-p,ELISA
Reactivity :	Human,Mouse
Category :	抗原抗体
Size :	100µg/50µg/20µg
Gene_name :	STRADA
Protein_name :	STE20-related kinase adapter protein alpha
Humangene_id :	92335
Humanswissprot_no :	Q7RTN6
Mousegene_id :	72149
Mouseswissprot_no :	Q3UUJ4
Immunogen :	The antiserum was produced against synthesized peptide derived from human STRAD. AA range:11-60
Specificity :	Strad Polyclonal Antibody detects endogenous levels of Strad protein.
Formulation :	Liquid in PBS containing 50% glycerol, 0.5% BSA and 0.02% sodium azide.
Source :	Rabbit
Dilution :	Western Blot: 1/500 - 1/2000. Immunohistochemistry: 1/100 - 1/300. ELISA: 1/10000. Not yet tested in other applications.
Purification :	The antibody was affinity-purified from rabbit antiserum by affinity-chromatography using epitope-specific immunogen.
Concentration :	1 mg/ml
Storage_stability :	-20°C/1 year
Msds :	MSDS_Antibody.pdf
Other_name :	STRADA; LYK5; STRAD; STE20-related kinase adapter protein alpha; STRAD alpha; STE20-related adapter protein; Serologically defined breast cancer antigen NY-BR-96
Molecular	46KD



Weight :

Product Images



Western Blot analysis of various cells using Strad Polyclonal Antibody