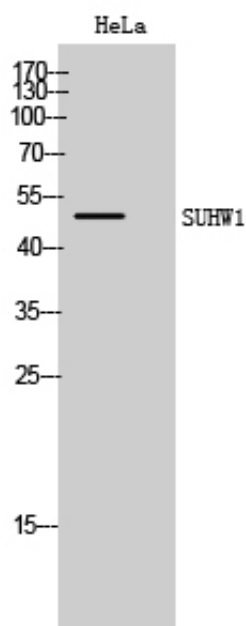




SUHW1 Polyclonal Antibody

Catalog_no :	<u>AT4467</u>
Applications :	<u>WB,ELISA</u>
Reactivity :	<u>Human</u>
Category :	<u>抗原抗体</u>
Size :	<u>100µg/50µg/20µg</u>
Gene_name :	<u>ZNF280A</u>
Protein_name :	<u>Zinc finger protein 280A</u>
Humangene_id :	<u>129025</u>
Humanswissprot_no :	<u>P59817</u>
Immunogen :	<u>The antiserum was produced against synthesized peptide derived from human ZNF280A. AA range:441-490</u>
Specificity :	<u>SUHW1 Polyclonal Antibody detects endogenous levels of SUHW1 protein.</u>
Formulation :	<u>Liquid in PBS containing 50% glycerol, 0.5% BSA and 0.02% sodium azide.</u>
Source :	<u>Rabbit</u>
Dilution :	<u>Western Blot: 1/500 - 1/2000. ELISA: 1/40000. Not yet tested in other applications.</u>
Purification :	<u>The antibody was affinity-purified from rabbit antiserum by affinity-chromatography using epitope-specific immunogen.</u>
Concentration :	<u>1 mg/ml</u>
Storage_stability :	<u>-20°C/1 year</u>
Msds :	<u>MSDS_Antibody.pdf</u>
Other_name :	<u>ZNF280A; SUHW1; ZNF280; ZNF636; Zinc finger protein 280A; 3'OY11.1; Suppressor of hairy wing homolog 1; Zinc finger protein 636</u>
Molecular Weight :	<u>50KD</u>

Product Images



Western Blot analysis of HeLa cells using SUHW1 Polyclonal Antibody cells nucleus extracted by Minute TM Cytoplasmic and Nuclear Fractionation kit (SC-003, Inventbiotech, MN, USA).