



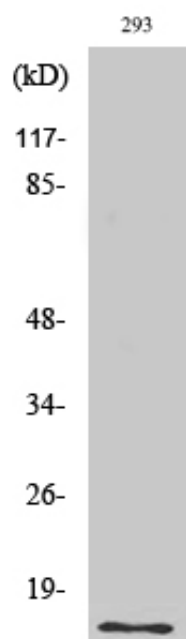
SUMO-1 Polyclonal Antibody

Catalog_no :	AT4470
Applications :	WB,IHC-p,IF,ELISA
Reactivity :	Human,Mouse,Rat
Category :	抗原抗体
Size :	100µg/50µg/20µg
Gene_name :	SUMO1
Protein_name :	Small ubiquitin-related modifier 1
Humangene_id :	7341
Humanswissprot_no :	P63165
Mousegene_id :	22218
Mouseswissprot_no :	P63166
Ratgene_id :	301442
Ratswissprot_no :	Q5I0H3
Immunogen :	The antiserum was produced against synthesized peptide derived from human Sumo1. AA range:1-50
Specificity :	SUMO-1 Polyclonal Antibody detects endogenous levels of SUMO-1 protein.
Formulation :	Liquid in PBS containing 50% glycerol, 0.5% BSA and 0.02% sodium azide.
Source :	Rabbit
Dilution :	Western Blot: 1/500 - 1/2000. Immunohistochemistry: 1/100 - 1/300. Immunofluorescence: 1/200 - 1/1000. ELISA: 1/20000. Not yet tested in other applications.
Purification :	The antibody was affinity-purified from rabbit antiserum by affinity-chromatography using epitope-specific immunogen.
Concentration :	1 mg/ml
Storage_stability :	-20°C/1 year



MsdS :	MSDS_Antibody.pdf
Other_name :	SUMO1; SMT3C; SMT3H3; UBL1; OK/SW-cl.43; Small ubiquitin-related modifier 1; SUMO-1; GAP-modifying protein 1; GMP1; SMT3 homolog 3; Sentrin; Ubiquitin-homology domain protein PIC1; Ubiquitin-like protein SMT3C; Smt3C; Ubiquitin-like protein
Molecular Weight :	12KD

Product Images



Western Blot analysis of various cells using SUMO-1 Polyclonal Antibody