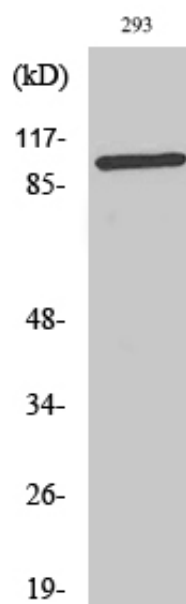


## SWAP Polyclonal Antibody

Catalog_no :	AT4475
Applications :	WB,ELISA
Reactivity :	Human
Category :	抗原抗体
Size :	100µg/50µg/20µg
Gene_name :	SFSWAP
Protein_name :	Splicing factor suppressor of white-apricot homolog
Humangene_id :	<a href="#">6433</a>
Humanswissprot_no :	<a href="#">Q12872</a>
Immunogen :	The antiserum was produced against synthesized peptide derived from human SFRS8. AA range:201-250
Specificity :	SWAP Polyclonal Antibody detects endogenous levels of SWAP protein.
Formulation :	Liquid in PBS containing 50% glycerol, 0.5% BSA and 0.02% sodium azide.
Source :	Rabbit
Dilution :	Western Blot: 1/500 - 1/2000. ELISA: 1/20000. Not yet tested in other applications.
Purification :	The antibody was affinity-purified from rabbit antiserum by affinity-chromatography using epitope-specific immunogen.
Concentration :	1 mg/ml
Storage_stability :	-20°C/1 year
Msds :	MSDS_Antibody.pdf
Other_name :	SFSWAP; SFRS8; SWAP; Splicing factor; suppressor of white-apricot homolog; Splicing factor, arginine/serine-rich 8; Suppressor of white apricot protein homolog
Molecular Weight :	105KD

## Product Images



Western Blot analysis of various cells using SWAP Polyclonal Antibody cells nucleus extracted by Minute TM Cytoplasmic and Nuclear Fractionation kit (SC-003, Inventbiotech, MN, USA).