

## Synaptotagmin Polyclonal Antibody

Catalog_no :	<u>AT4484</u>
Applications :	<u>WB,IHC-p,ELISA</u>
Reactivity :	<u>Human,Mouse,Rat</u>
Category :	<u>抗原抗体</u>
Size :	<u>100µg/50µg/20µg</u>
Gene_name :	<u>SYT1/SYT2</u>
Protein_name :	<u>Synaptotagmin-1/2</u>
Humangene_id :	<u><a href="#">6857/127833</a></u>
Humanswissprot_no :	<u><a href="#">P21579/Q8N9I0</a></u>
Mousegene_id :	<u><a href="#">20979/20980</a></u>
Ratgene_id :	<u><a href="#">25716/24805</a></u>
Ratswissprot_no :	<u><a href="#">P21707/P29101</a></u>
Immunogen :	<u>The antiserum was produced against synthesized peptide derived from human Synaptotagmin. AA range:276-325</u>
Specificity :	<u>Synaptotagmin Polyclonal Antibody detects endogenous levels of Synaptotagmin protein.</u>
Formulation :	<u>Liquid in PBS containing 50% glycerol, 0.5% BSA and 0.02% sodium azide.</u>
Source :	<u>Rabbit</u>
Dilution :	<u>Western Blot: 1/500 - 1/2000. Immunohistochemistry: 1/100 - 1/300. ELISA: 1/20000. Not yet tested in other applications.</u>
Purification :	<u>The antibody was affinity-purified from rabbit antiserum by affinity-chromatography using epitope-specific immunogen.</u>
Concentration :	<u>1 mg/ml</u>
Storage_stability :	<u>-20°C/1 year</u>
Msds :	<u>MSDS_Antibody.pdf</u>
Other_name :	<u>SYT1; SVP65; SYT; Synaptotagmin-1; Synaptotagmin I; SytI; p65; SYT2; Synaptotagmin-2;</u>



Synaptotagmin II; SytII

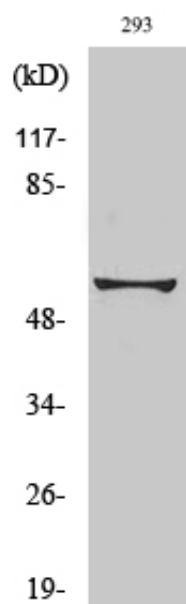
---

Molecular  
Weight :

50KD

---

## Product Images



Western Blot analysis of various cells using Synaptotagmin Polyclonal Antibody diluted at 1 : 2000