

## Synaptotagmin X Polyclonal Antibody

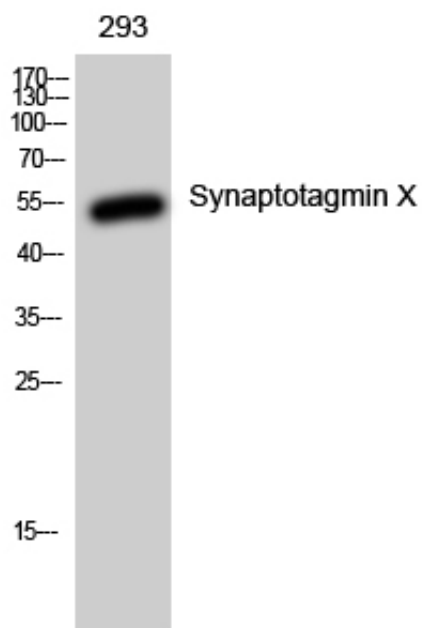
Catalog_no :	AT4486
Applications :	WB,ELISA
Reactivity :	Human,Mouse,Rat
Category :	抗原抗体
Size :	100µg/50µg/20µg
Gene_name :	SYT10
Protein_name :	Synaptotagmin-10
Humangene_id :	<a href="#">341359</a>
Humanswissprot_no :	<a href="#">Q6XYQ8</a>
Mousegene_id :	<a href="#">54526</a>
Mouseswissprot_no :	<a href="#">Q9R0N4</a>
Ratgene_id :	<a href="#">60567</a>
Ratswissprot_no :	<a href="#">O08625</a>
Immunogen :	Synthesized peptide derived from Synaptotagmin X . at AA range: 380-460
Specificity :	Synaptotagmin X Polyclonal Antibody detects endogenous levels of Synaptotagmin X protein.
Formulation :	Liquid in PBS containing 50% glycerol, 0.5% BSA and 0.02% sodium azide.
Source :	Rabbit
Dilution :	Western Blot: 1/500 - 1/2000. ELISA: 1/20000. Not yet tested in other applications.
Purification :	The antibody was affinity-purified from rabbit antiserum by affinity-chromatography using epitope-specific immunogen.
Concentration :	1 mg/ml
Storage_stability :	-20°C/1 year
Msds :	<a href="#">MSDS_Antibody.pdf</a>



Other\_name : SYT10; Synaptotagmin-10; Synaptotagmin X; SytX

Molecular Weight : 55KD

## Product Images



Western Blot analysis of 293 cells using Synaptotagmin X Polyclonal Antibody