

Syndecan-4 Polyclonal Antibody

Catalog_no :	AT4491
Applications :	WB,IHC-p,IF,ELISA
Reactivity :	Human,Mouse,Rat
Category :	抗原抗体
Size :	100µg/50µg/20µg
Gene_name :	SDC4
Protein_name :	Syndecan-4
Humangene_id :	6385
Humanswissprot_no :	P31431
Mousegene_id :	20971
Mouseswissprot_no :	O35988
Ratgene_id :	24771
Ratswissprot_no :	P34901
Immunogen :	The antiserum was produced against synthesized peptide derived from human Syndecan4. AA range:145-194
Specificity :	Syndecan-4 Polyclonal Antibody detects endogenous levels of Syndecan-4 protein.
Formulation :	Liquid in PBS containing 50% glycerol, 0.5% BSA and 0.02% sodium azide.
Source :	Rabbit
Dilution :	Western Blot: 1/500 - 1/2000. Immunohistochemistry: 1/100 - 1/300. Immunofluorescence: 1/200 - 1/1000. ELISA: 1/40000. Not yet tested in other applications.
Purification :	The antibody was affinity-purified from rabbit antiserum by affinity-chromatography using epitope-specific immunogen.
Concentration :	1 mg/ml
Storage_stability :	-20°C/1 year

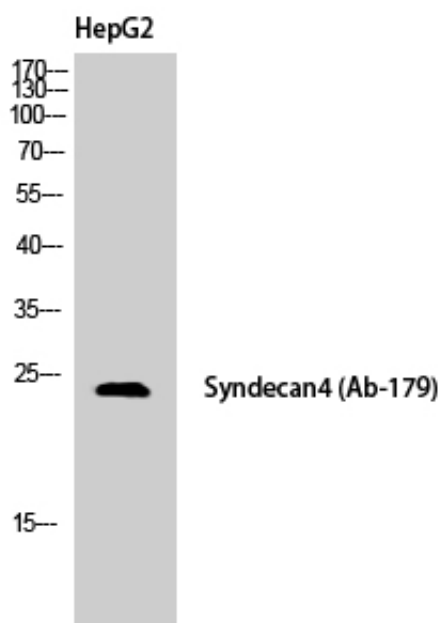


Msd : MSDS_Antibody.pdf

Other_name : SDC4; Syndecan-4; SYND4; Amphiglycan; Ryudocan core protein

Molecular Weight : 22KD

Product Images



Western Blot analysis of HepG2 cells using Syndecan-4 Polyclonal Antibody