

Synuclein- β Polyclonal Antibody

Catalog_no :	AT4498
Applications :	WB,IHC-p,IF,ELISA
Reactivity :	Human,Mouse,Rat
Category :	抗原抗体
Size :	100 μ g/50 μ g/20 μ g
Gene_name :	SNCB
Protein_name :	Beta-synuclein
Humangene_id	6620
:	
Humanswissprot	Q16143
_no :	
Mousegene_id :	104069
Mouseswissprot	Q91Z73
_no :	
Ratgene_id :	113893
Ratswissprot_no	Q63754
:	
Immunogen :	The antiserum was produced against synthesized peptide derived from human Synuclein beta. AA range:85-134
Specificity :	Synuclein- β Polyclonal Antibody detects endogenous levels of Synuclein- β protein.
Formulation :	Liquid in PBS containing 50% glycerol, 0.5% BSA and 0.02% sodium azide.
Source :	Rabbit
Dilution :	Western Blot: 1/500 - 1/2000. Immunohistochemistry: 1/100 - 1/300. Immunofluorescence: 1/200 - 1/1000. ELISA: 1/20000. Not yet tested in other applications.
Purification :	The antibody was affinity-purified from rabbit antiserum by affinity-chromatography using epitope-specific immunogen.
Concentration :	1 mg/ml
Storage_stability	-20°C/1 year
:	

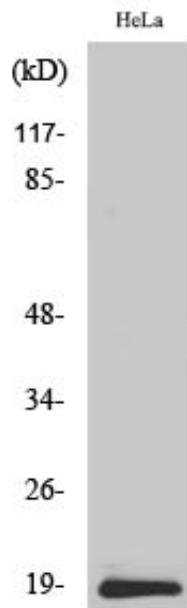


Msd : MSDS_Antibody.pdf

Other_name : SNCB; Beta-synuclein

Molecular Weight : 14KD

Product Images



Western Blot analysis of various cells using Synuclein- β Polyclonal Antibody