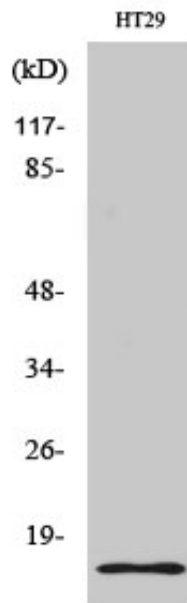




## Synuclein-γ Polyclonal Antibody

Catalog_no :	AT4499
Applications :	WB,IHC-p,ELISA
Reactivity :	Human
Category :	抗原抗体
Size :	100μg/50μg/20μg
Gene_name :	SNCG
Protein_name :	Gamma-synuclein
Humangene_id :	<a href="#">6623</a>
Humanswissprot_no :	<a href="#">O76070</a>
Immunogen :	The antiserum was produced against synthesized peptide derived from human Synuclein gamma. AA range:78-127
Specificity :	Synuclein-γ Polyclonal Antibody detects endogenous levels of Synuclein-γ protein.
Formulation :	Liquid in PBS containing 50% glycerol, 0.5% BSA and 0.02% sodium azide.
Source :	Rabbit
Dilution :	Western Blot: 1/500 - 1/2000. Immunohistochemistry: 1/100 - 1/300. ELISA: 1/10000. Not yet tested in other applications.
Purification :	The antibody was affinity-purified from rabbit antiserum by affinity-chromatography using epitope-specific immunogen.
Concentration :	1 mg/ml
Storage_stability :	-20°C/1 year
Msds :	MSDS_Antibody.pdf
Other_name :	SNCG; BCSG1; PERSYN; PRSN; Gamma-synuclein; Breast cancer-specific gene 1 protein; Persyn; Synoretin; SR
Molecular Weight :	20KD

## Product Images



Western Blot analysis of various cells using Synuclein- $\gamma$  Polyclonal Antibody