

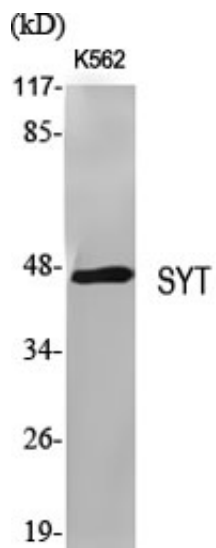
SYT Polyclonal Antibody

Catalog_no :	AT4501
Applications :	WB,IHC-p,ELISA
Reactivity :	Human,Mouse,Rat
Category :	抗原抗体
Size :	100µg/50µg/20µg
Gene_name :	SS18
Protein_name :	Protein SSXT
Humangene_id :	6760
Humanswissprot_no :	Q15532
Mousegene_id :	268996
Mouseswissprot_no :	Q62280
Immunogen :	The antiserum was produced against synthesized peptide derived from human SSXT. AA range:1-50
Specificity :	SYT Polyclonal Antibody detects endogenous levels of SYT protein.
Formulation :	Liquid in PBS containing 50% glycerol, 0.5% BSA and 0.02% sodium azide.
Source :	Rabbit
Dilution :	Western Blot: 1/500 - 1/2000. Immunohistochemistry: 1/100 - 1/300. ELISA: 1/20000. Not yet tested in other applications.
Purification :	The antibody was affinity-purified from rabbit antiserum by affinity-chromatography using epitope-specific immunogen.
Concentration :	1 mg/ml
Storage_stability :	-20°C/1 year
Msds :	MSDS_Antibody.pdf
Other_name :	SS18; SSXT; SYT; Protein SSXT; Protein SYT; Synovial sarcoma translocated to X chromosome protein
Molecular	45KD

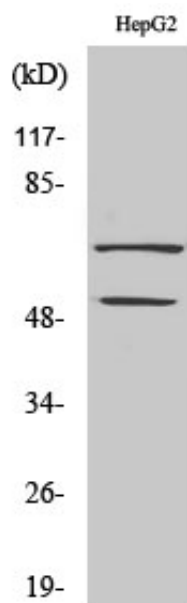


Weight :

Product Images



Western Blot analysis of various cells using SYT Polyclonal Antibody



Western Blot analysis of COLO205 cells using SYT Polyclonal Antibody