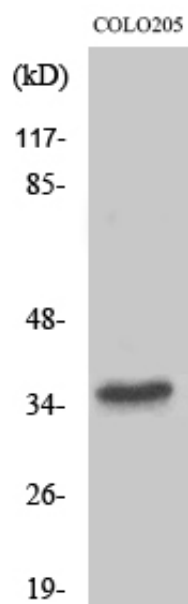


T2R8 Polyclonal Antibody

Catalog_no :	AT4516
Applications :	WB,IF,ELISA
Reactivity :	Human
Category :	抗原抗体
Size :	100µg/50µg/20µg
Gene_name :	TAS2R8
Protein_name :	Taste receptor type 2 member 8
Humangene_id :	50836
Humanswissprot_no :	Q9NYW2
Immunogen :	The antiserum was produced against synthesized peptide derived from human TAS2R8. AA range:45-94
Specificity :	T2R8 Polyclonal Antibody detects endogenous levels of T2R8 protein.
Formulation :	Liquid in PBS containing 50% glycerol, 0.5% BSA and 0.02% sodium azide.
Source :	Rabbit
Dilution :	Western Blot: 1/500 - 1/2000. Immunofluorescence: 1/200 - 1/1000. ELISA: 1/10000. Not yet tested in other applications.
Purification :	The antibody was affinity-purified from rabbit antiserum by affinity-chromatography using epitope-specific immunogen.
Concentration :	1 mg/ml
Storage_stability :	-20°C/1 year
Msds :	MSDS_Antibody.pdf
Other_name :	TAS2R8 ; Taste receptor type 2 member 8 ; T2R8 ; Taste receptor family B member 5 ; TRB5
Molecular Weight :	36KD

Product Images



Western Blot analysis of various cells using T2R8 Polyclonal Antibody