

TADA2L Polyclonal Antibody

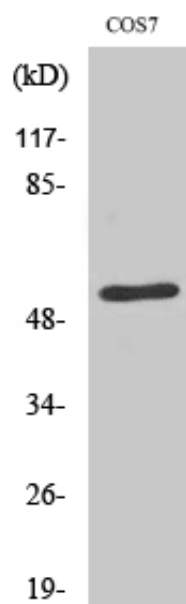
Catalog_no :	AT4524
Applications :	WB,ELISA
Reactivity :	Human,Mouse,Rat,Monkey
Category :	抗原抗体
Size :	100µg/50µg/20µg
Gene_name :	TADA2A
Protein_name :	Transcriptional adapter 2-alpha
Humangene_id :	6871
Humanswissprot_no :	O75478
Mousegene_id :	217031
Mouseswissprot_no :	Q8CHV6
Ratgene_id :	360581
Ratswissprot_no :	Q6AYE3
Immunogen :	The antiserum was produced against synthesized peptide derived from human ADA2L. AA range:206-255
Specificity :	TADA2L Polyclonal Antibody detects endogenous levels of TADA2L protein.
Formulation :	Liquid in PBS containing 50% glycerol, 0.5% BSA and 0.02% sodium azide.
Source :	Rabbit
Dilution :	Western Blot: 1/500 - 1/2000. ELISA: 1/10000. Not yet tested in other applications.
Purification :	The antibody was affinity-purified from rabbit antiserum by affinity-chromatography using epitope-specific immunogen.
Concentration :	1 mg/ml
Storage_stability :	-20°C/1 year
Msds :	MSDS_Antibody.pdf



Other_name : TADA2A; TADA2L; KL04P; Transcriptional adapter 2-alpha; Transcriptional adapter 2-like; ADA2-like protein

Molecular Weight : 47KD

Product Images



Western Blot analysis of various cells using TADA2L Polyclonal Antibody diluted at 1 : 2000 cells nucleus extracted by Minute TM Cytoplasmic and Nuclear Fractionation kit (SC-003, Inventbiotech, MN, USA).