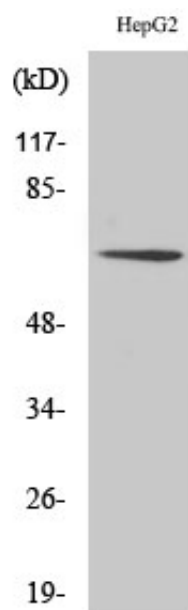


## TAF II p68 Polyclonal Antibody

Catalog_no :	AT4530
Applications :	WB,IHC-p,ELISA
Reactivity :	Human,Mouse
Category :	抗原抗体
Size :	100µg/50µg/20µg
Gene_name :	TAF15
Protein_name :	TATA-binding protein-associated factor 2N
Humangene_id :	<a href="#">8148</a>
Humanswissprot_no :	<a href="#">Q92804</a>
Immunogen :	The antiserum was produced against synthesized peptide derived from human TAF15. AA range:351-400
Specificity :	TAF II p68 Polyclonal Antibody detects endogenous levels of TAF II p68 protein.
Formulation :	Liquid in PBS containing 50% glycerol, 0.5% BSA and 0.02% sodium azide.
Source :	Rabbit
Dilution :	Western Blot: 1/500 - 1/2000. Immunohistochemistry: 1/100 - 1/300. ELISA: 1/5000. Not yet tested in other applications.
Purification :	The antibody was affinity-purified from rabbit antiserum by affinity-chromatography using epitope-specific immunogen.
Concentration :	1 mg/ml
Storage_stability :	-20°C/1 year
Msds :	MSDS_Antibody.pdf
Other_name :	TAF15; RBP56; TAF2N; TATA-binding protein-associated factor 2N; 68 kDa TATA-binding protein-associated factor; TAF(II)68; TAFII68; RNA-binding protein 56
Molecular Weight :	62KD

## Product Images



Western Blot analysis of various cells using TAF II p68 Polyclonal Antibody