

## TANK Polyclonal Antibody

Catalog_no :	AT4540
Applications :	WB,IHC-p,IF,ELISA
Reactivity :	Human,Mouse,Rat
Category :	抗原抗体
Size :	100µg/50µg/20µg
Gene_name :	TANK
Protein_name :	TRAF family member-associated NF-kappa-B activator
Humangene_id :	<a href="#">10010</a>
Humanswissprot_no :	<a href="#">Q92844</a>
Mousegene_id :	<a href="#">21353</a>
Mouseswissprot_no :	<a href="#">P70347</a>
Immunogen :	The antiserum was produced against synthesized peptide derived from human TANK. AA range:171-220
Specificity :	TANK Polyclonal Antibody detects endogenous levels of TANK protein.
Formulation :	Liquid in PBS containing 50% glycerol, 0.5% BSA and 0.02% sodium azide.
Source :	Rabbit
Dilution :	Western Blot: 1/500 - 1/2000. Immunohistochemistry: 1/100 - 1/300. Immunofluorescence: 1/200 - 1/1000. ELISA: 1/10000. Not yet tested in other applications.
Purification :	The antibody was affinity-purified from rabbit antiserum by affinity-chromatography using epitope-specific immunogen.
Concentration :	1 mg/ml
Storage_stability :	-20°C/1 year
Msds :	<a href="#">MSDS_Antibody.pdf</a>
Other_name :	TANK; ITRAF; TRAF2; TRAF family member-associated NF-kappa-B activator; TRAF-interacting protein; I-TRAF

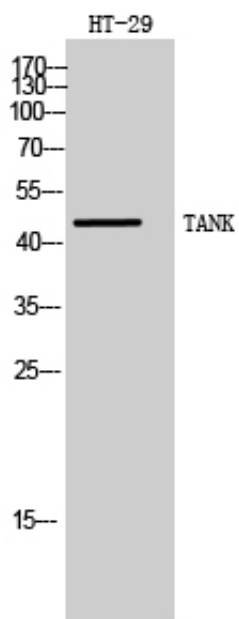


Molecular  
Weight :

48KD

---

## Product Images



Western Blot analysis of HT-29 cells using TANK Polyclonal Antibody