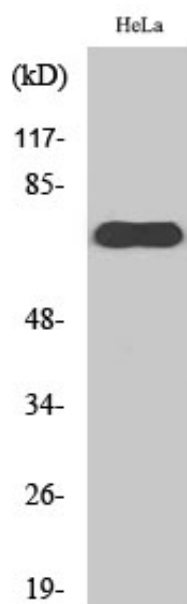




## TAP Polyclonal Antibody

Catalog_no :	AT4541
Applications :	WB,ELISA
Reactivity :	Human
Category :	抗原抗体
Size :	100µg/50µg/20µg
Gene_name :	NXF1
Protein_name :	Nuclear RNA export factor 1
Humangene_id :	<a href="#">10482</a>
Humanswissprot_no :	<a href="#">Q9UBU9</a>
Immunogen :	The antiserum was produced against synthesized peptide derived from human NXF1. AA range:1-50
Specificity :	TAP Polyclonal Antibody detects endogenous levels of TAP protein.
Formulation :	Liquid in PBS containing 50% glycerol, 0.5% BSA and 0.02% sodium azide.
Source :	Rabbit
Dilution :	Western Blot: 1/500 - 1/2000. ELISA: 1/40000. Not yet tested in other applications.
Purification :	The antibody was affinity-purified from rabbit antiserum by affinity-chromatography using epitope-specific immunogen.
Concentration :	1 mg/ml
Storage_stability :	-20°C/1 year
Msds :	MSDS_Antibody.pdf
Other_name :	NXF1; TAP; Nuclear RNA export factor 1; Tip-associated protein; Tip-associating protein; mRNA export factor TAP
Molecular Weight :	70KD

## Product Images



Western Blot analysis of various cells using TAP  
Polyclonal Antibody diluted at 1 : 2000