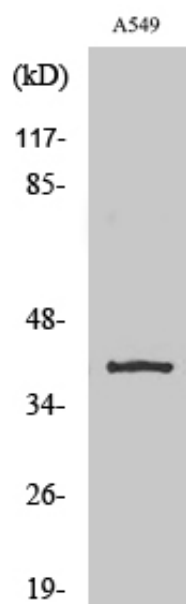




## TASK-5 Polyclonal Antibody

|                     |  |
|---------------------|--|
| Catalog_no :        | AT4542   |
| Applications :      | WB,IHC-p,ELISA   |
| Reactivity :        | Human  |
| Category :          | 抗原抗体   |
| Size :              | 100µg/50µg/20µg  |
| Gene_name :         | KCNK15   |
| Protein_name :      | Potassium channel subfamily K member 15  |
| Humangene_id :      | <a href="#">60598</a>  |
| Humanswissprot_no : | <a href="#">Q9H427</a>   |
| Immunogen :         | The antiserum was produced against synthesized peptide derived from human KCNK15. AA range:273-322   |
| Specificity :       | TASK-5 Polyclonal Antibody detects endogenous levels of TASK-5 protein.  |
| Formulation :       | Liquid in PBS containing 50% glycerol, 0.5% BSA and 0.02% sodium azide.  |
| Source :            | Rabbit   |
| Dilution :          | Western Blot: 1/500 - 1/2000. Immunohistochemistry: 1/100 - 1/300. ELISA: 1/20000. Not yet tested in other applications.   |
| Purification :      | The antibody was affinity-purified from rabbit antiserum by affinity-chromatography using epitope-specific immunogen.  |
| Concentration :     | 1 mg/ml  |
| Storage_stability : | -20°C/1 year   |
| Msds :              | MSDS_Antibody.pdf  |
| Other_name :        | KCNK15; TASK5; Potassium channel subfamily K member 15; Acid-sensitive potassium channel protein TASK-5; TWIK-related acid-sensitive K(+) channel 5; Two pore potassium channel KT3.3; Two pore K(+) channel KT3.3 |
| Molecular Weight :  | 42KD   |

## Product Images



Western Blot analysis of various cells using TASK-5 Polyclonal Antibody diluted at 1 : 1000