

Tau Polyclonal Antibody

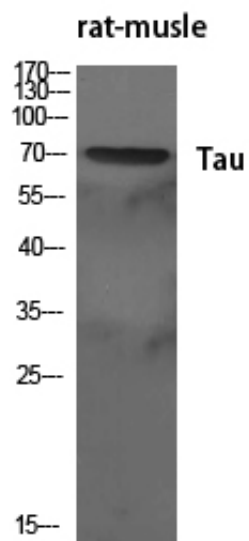
Catalog_no :	AT4546
Applications :	WB,IHC-p,IF,ELISA
Reactivity :	Human,Mouse,Rat
Category :	抗原抗体
Size :	100µg/50µg/20µg
Gene_name :	MAPT
Protein_name :	Microtubule-associated protein tau
Humangene_id	4137
:	
Humanswissprot	P10636
_no :	
Mousegene_id :	17762
Mouseswissprot	P10637
_no :	
Ratswissprot_no	P19332
:	
Immunogen :	The antiserum was produced against synthesized peptide derived from human Tau. AA range:496-545
Specificity :	Tau Polyclonal Antibody detects endogenous levels of Tau protein.
Formulation :	Liquid in PBS containing 50% glycerol, 0.5% BSA and 0.02% sodium azide.
Source :	Rabbit
Dilution :	Western Blot: 1/500 - 1/2000. Immunohistochemistry: 1/100 - 1/300. Immunofluorescence: 1/200 - 1/1000. ELISA: 1/20000. Not yet tested in other applications.
Purification :	The antibody was affinity-purified from rabbit antiserum by affinity-chromatography using epitope-specific immunogen.
Concentration :	1 mg/ml
Storage_stability	-20°C/1 year
:	
Msds :	MSDS_Antibody.pdf



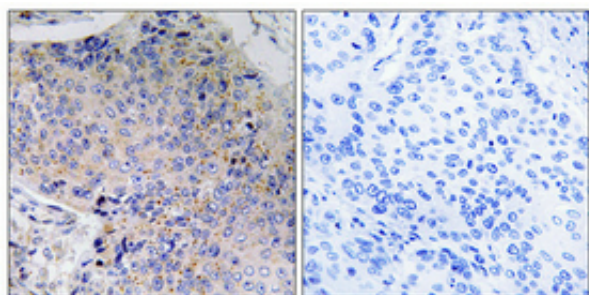
Other_name : MAPT; MAPTL; MTBT1; TAU; Microtubule-associated protein tau; Neurofibrillary tangle protein; Paired helical filament-tau; PHF-tau

Molecular Weight : 79KD

Product Images



Western Blot analysis of various cells using Tau Polyclonal Antibody diluted at 1 : 500



Immunohistochemical analysis of paraffin-embedded Human lung cancer. Antibody was diluted at 1:100(4°,overnight). High-pressure and temperature Tris-EDTA,pH8.0 was used for antigen retrieval. Negative contrl (right) obtaned from antibody was pre-absorbed by immunogen peptide.