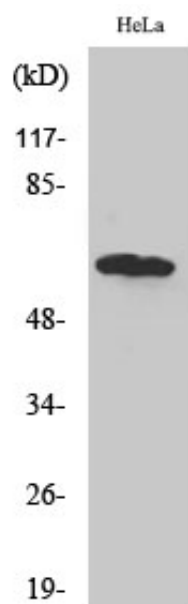




TBC1D3A/B/C Polyclonal Antibody

Catalog_no :	AT4559
Applications :	WB,IF,ELISA
Reactivity :	Human
Category :	抗原抗体
Size :	100µg/50µg/20µg
Gene_name :	TBC1D3
Protein_name :	TBC1 domain family member 3
Humangene_id :	414059/727735/84218/643947/414060/653380/654341/729873
Humanswissprot_no :	Q8IZP1/A6NDS4/Q6IPX1
Immunogen :	The antiserum was produced against synthesized peptide derived from human TBC1D3. AA range:481-530
Specificity :	TBC1D3A/B/C Polyclonal Antibody detects endogenous levels of TBC1D3A/B/C protein.
Formulation :	Liquid in PBS containing 50% glycerol, 0.5% BSA and 0.02% sodium azide.
Source :	Rabbit
Dilution :	Western Blot: 1/500 - 1/2000. ELISA: 1/20000. Not yet tested in other applications.
Purification :	The antibody was affinity-purified from rabbit antiserum by affinity-chromatography using epitope-specific immunogen.
Concentration :	1 mg/ml
Storage_stability :	-20°C/1 year
Msds :	MSDS_Antibody.pdf
Other_name :	TBC1D3; PRC17; TBC1D3A; TBC1 domain family member 3; Prostate cancer gene 17 protein; Protein TRE17-alpha; Rab GTPase-activating protein PRC17; TBC1D3B; TBC1D3I; TBC1 domain family member 3B; TBC1D3C; TBC1D3D; TBC1 domain family member 3C
Molecular Weight :	62KD

Product Images



Western Blot analysis of various cells using
TBC1D3A/B/C Polyclonal Antibody