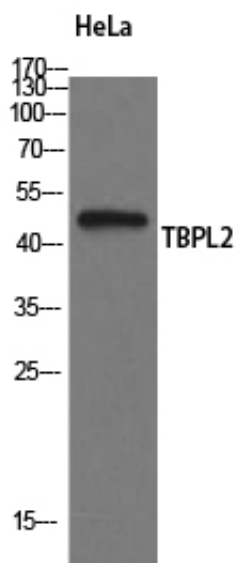




TBPL2 Polyclonal Antibody

Catalog_no :	AT4563
Applications :	WB,IHC-p,ELISA
Reactivity :	Human
Category :	抗原抗体
Size :	100µg/50µg/20µg
Gene_name :	TBPL2
Protein_name :	TATA box-binding protein-like protein 2
Humangene_id :	387332
Humanswissprot_no :	Q6SJ96
Immunogen :	The antiserum was produced against synthesized peptide derived from human TBPL2. AA range:81-130
Specificity :	TBPL2 Polyclonal Antibody detects endogenous levels of TBPL2 protein.
Formulation :	Liquid in PBS containing 50% glycerol, 0.5% BSA and 0.02% sodium azide.
Source :	Rabbit
Dilution :	Western Blot: 1/500 - 1/2000. Immunohistochemistry: 1/100 - 1/300. ELISA: 1/5000. Not yet tested in other applications.
Purification :	The antibody was affinity-purified from rabbit antiserum by affinity-chromatography using epitope-specific immunogen.
Concentration :	1 mg/ml
Storage_stability :	-20°C/1 year
Msds :	MSDS_Antibody.pdf
Other_name :	TBPL2; TBP2; TRF3; TATA box-binding protein-like protein 2; TBP-like protein 2; TATA box-binding protein-related factor 3; TBP-related factor 3
Molecular Weight :	41KD

Product Images



Western Blot analysis of HeLa cells using TBPL2 Polyclonal Antibody