

## TBX15/18 Polyclonal Antibody

Catalog_no :	AT4566
Applications :	WB,IHC-p,IF,ELISA
Reactivity :	Human,Mouse
Category :	抗原抗体
Size :	100µg/50µg/20µg
Gene_name :	TBX15/TBX18
Protein_name :	T-box transcription factor TBX15/18
Humangene_id :	<a href="#">9096</a>
Humanswissprot_no :	<a href="#">O95935/Q96SF7</a>
Mousegene_id :	<a href="#">76365/21384</a>
Immunogen :	The antiserum was produced against synthesized peptide derived from human TBX15/18. AA range:161-210
Specificity :	TBX15/18 Polyclonal Antibody detects endogenous levels of TBX15/18 protein.
Formulation :	Liquid in PBS containing 50% glycerol, 0.5% BSA and 0.02% sodium azide.
Source :	Rabbit
Dilution :	Western Blot: 1/500 - 1/2000. Immunohistochemistry: 1/100 - 1/300. Immunofluorescence: 1/200 - 1/1000. ELISA: 1/20000. Not yet tested in other applications.
Purification :	The antibody was affinity-purified from rabbit antiserum by affinity-chromatography using epitope-specific immunogen.
Concentration :	1 mg/ml
Storage_stability :	-20°C/1 year
Msds :	MSDS_Antibody.pdf
Other_name :	TBX18; T-box transcription factor TBX18; T-box protein 18; TBX15; TBX14; T-box transcription factor TBX15; T-box protein 15; T-box transcription factor TBX14; T-box protein 14
Molecular Weight :	64KD

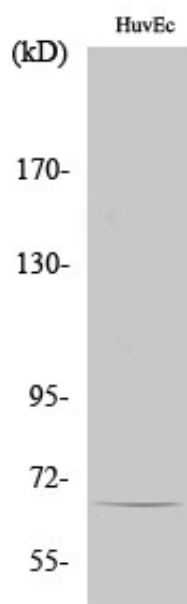


**专注二抗产品**

Biodragon旗下品牌

---

## Product Images



Western Blot analysis of various cells using TBX15/18 Polyclonal Antibody cells nucleus extracted by Minute TM Cytoplasmic and Nuclear Fractionation kit (SC-003, Inventbiotech, MN, USA).