

T-cadherin Polyclonal Antibody

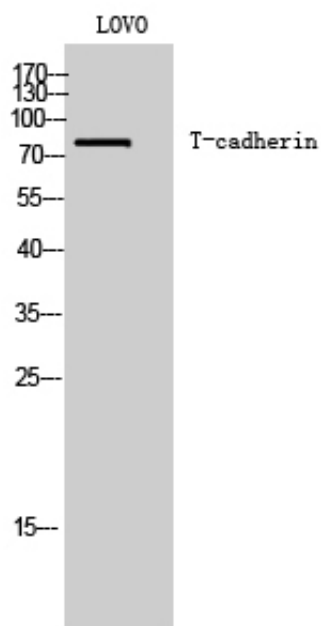
Catalog_no :	AT4572
Applications :	WB,IHC-p,IF,ELISA
Reactivity :	Human,Mouse,Rat
Category :	抗原抗体
Size :	100µg/50µg/20µg
Gene_name :	CDH13
Protein_name :	Cadherin-13
Humangene_id :	1012
Humanswissprot_no :	P55290
Mousegene_id :	12554
Mouseswissprot_no :	Q9WTR5
Immunogen :	The antiserum was produced against synthesized peptide derived from human CDH13. AA range:331-380
Specificity :	T-cadherin Polyclonal Antibody detects endogenous levels of T-cadherin protein.
Formulation :	Liquid in PBS containing 50% glycerol, 0.5% BSA and 0.02% sodium azide.
Source :	Rabbit
Dilution :	Western Blot: 1/500 - 1/2000. Immunohistochemistry: 1/100 - 1/300. Immunofluorescence: 1/200 - 1/1000. ELISA: 1/20000. Not yet tested in other applications.
Purification :	The antibody was affinity-purified from rabbit antiserum by affinity-chromatography using epitope-specific immunogen.
Concentration :	1 mg/ml
Storage_stability :	-20°C/1 year
Msds :	MSDS_Antibody.pdf
Other_name :	CDH13; CDHH; Cadherin-13; Heart cadherin; H-cadherin; P105; Truncated cadherin; T-cad; T-cadherin



Molecular
Weight :

78KD

Product Images



Western Blot analysis of LOVO cells using T-cadherin Polyclonal Antibody