

TCEAL1 Polyclonal Antibody

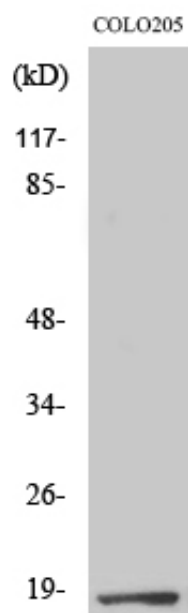
Catalog_no :	<u>AT4573</u>
Applications :	<u>WB,IHC-p,ELISA</u>
Reactivity :	<u>Human,Mouse,Rat</u>
Category :	<u>抗原抗体</u>
Size :	<u>100µg/50µg/20µg</u>
Gene_name :	<u>TCEAL1</u>
Protein_name :	<u>Transcription elongation factor A protein-like 1</u>
Humangene_id	<u>9338</u>
:	<u></u>
Humanswissprot	<u>Q15170</u>
_no :	<u></u>
Mousegene_id :	<u>237052</u>
Mouseswissprot	<u>Q921P9</u>
_no :	<u></u>
Ratgene_id :	<u>302593</u>
Ratswissprot_no	<u>Q5PPP3</u>
:	<u></u>
Immunogen :	<u>The antiserum was produced against synthesized peptide derived from human TCEAL1. AA range:91-140</u>
Specificity :	<u>TCEAL1 Polyclonal Antibody detects endogenous levels of TCEAL1 protein.</u>
Formulation :	<u>Liquid in PBS containing 50% glycerol, 0.5% BSA and 0.02% sodium azide.</u>
Source :	<u>Rabbit</u>
Dilution :	<u>Western Blot: 1/500 - 1/2000.IHC-p:1:50-300 ELISA: 1/20000. Not yet tested in other applications.</u>
Purification :	<u>The antibody was affinity-purified from rabbit antiserum by affinity-chromatography using epitope-specific immunogen.</u>
Concentration :	<u>1 mg/ml</u>
Storage_stability	<u>-20°C/1 year</u>
:	<u></u>
Msds :	<u>MSDS_Antibody.pdf</u>



Other_name : TCEAL1; SIIR; Transcription elongation factor A protein-like 1; TCEA-like protein 1;
Nuclear phosphoprotein p21/SIIR; Transcription elongation factor S-II protein-like 1

Molecular Weight : 20KD

Product Images



Western Blot analysis of various cells using TCEAL1 Polyclonal Antibody cells nucleus extracted by Minute TM Cytoplasmic and Nuclear Fractionation kit (SC-003, Invent biotech, MN, USA).