

TCP-1 ϵ Polyclonal Antibody

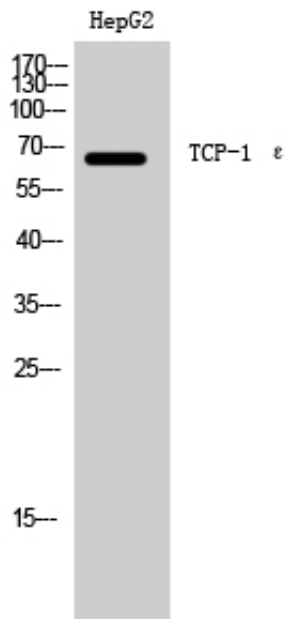
Catalog_no :	<u>AT4584</u>
Applications :	<u>WB,ELISA</u>
Reactivity :	<u>Human,Mouse,Rat</u>
Category :	<u>抗原抗体</u>
Size :	<u>100μg/50μg/20μg</u>
Gene_name :	<u>CCT5</u>
Protein_name :	<u>T-complex protein 1 subunit epsilon</u>
Humangene_id :	<u>22948</u>
Humanswissprot_no :	<u>P48643</u>
Mousegene_id :	<u>12465</u>
Mouseswissprot_no :	<u>P80316</u>
Ratgene_id :	<u>294864</u>
Ratswissprot_no :	<u>Q68FQ0</u>
Immunogen :	<u>The antiserum was produced against synthesized peptide derived from human CCT5. AA range:241-290</u>
Specificity :	<u>TCP-1 ϵ Polyclonal Antibody detects endogenous levels of TCP-1 ϵ protein.</u>
Formulation :	<u>Liquid in PBS containing 50% glycerol, 0.5% BSA and 0.02% sodium azide.</u>
Source :	<u>Rabbit</u>
Dilution :	<u>Western Blot: 1/500 - 1/2000. ELISA: 1/10000. Not yet tested in other applications.</u>
Purification :	<u>The antibody was affinity-purified from rabbit antiserum by affinity-chromatography using epitope-specific immunogen.</u>
Concentration :	<u>1 mg/ml</u>
Storage_stability :	<u>-20°C/1 year</u>
Msds :	<u>MSDS_Antibody.pdf</u>



Other_name : CCT5; CCTE; KIAA0098; T-complex protein 1 subunit epsilon; TCP-1-epsilon; CCT-epsilon

Molecular Weight : 67KD

Product Images



Western Blot analysis of HepG2 cells using TCP-1 ϵ Polyclonal Antibody