

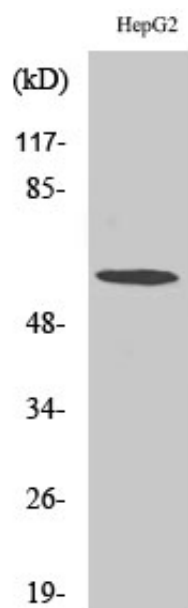
TCP-1 ζ Polyclonal Antibody

| | |
|---------------------|---|
| Catalog_no : | AT4585 |
| Applications : | WB,IHC-p,ELISA |
| Reactivity : | Human,Mouse,Rat |
| Category : | 抗原抗体 |
| Size : | 100 μ g/50 μ g/20 μ g |
| Gene_name : | CCT6A |
| Protein_name : | T-complex protein 1 subunit zeta |
| Humangene_id : | 908 |
| Humanswissprot_no : | P40227 |
| Mousegene_id : | 12466 |
| Mouseswissprot_no : | P80317 |
| Immunogen : | The antiserum was produced against synthesized peptide derived from human CCT6A. AA range:171-220 |
| Specificity : | TCP-1 ζ Polyclonal Antibody detects endogenous levels of TCP-1 ζ protein. |
| Formulation : | Liquid in PBS containing 50% glycerol, 0.5% BSA and 0.02% sodium azide. |
| Source : | Rabbit |
| Dilution : | Western Blot: 1/500 - 1/2000. Immunohistochemistry: 1/100 - 1/300. ELISA: 1/10000. Not yet tested in other applications. |
| Purification : | The antibody was affinity-purified from rabbit antiserum by affinity-chromatography using epitope-specific immunogen. |
| Concentration : | 1 mg/ml |
| Storage_stability : | -20°C/1 year |
| Msds : | MSDS_Antibody.pdf |
| Other_name : | CCT6A; CCT6; CCTZ; T-complex protein 1 subunit zeta; TCP-1-zeta; Acute morphine dependence-related protein 2; CCT-zeta-1; HTR3; Tcp20 |
| Molecular | 60KD |



Weight :

Product Images



Western Blot analysis of various cells using TCP-1 ζ
Polyclonal Antibody diluted at 1 : 500