

TCP-1  $\eta$  Polyclonal Antibody

Catalog_no :	AT4586
Applications :	WB,ELISA
Reactivity :	Human,Mouse,Rat
Category :	抗原抗体
Size :	100 $\mu$ g/50 $\mu$ g/20 $\mu$ g
Gene_name :	CCT7
Protein_name :	T-complex protein 1 subunit eta
Humangene_id :	<a href="#">10574</a>
Humanswissprot_no :	<a href="#">Q99832</a>
Mousegene_id :	<a href="#">12468</a>
Mouseswissprot_no :	<a href="#">P80313</a>
Immunogen :	The antiserum was produced against synthesized peptide derived from human CCT7. AA range:221-270
Specificity :	TCP-1 $\eta$ Polyclonal Antibody detects endogenous levels of TCP-1 $\eta$ protein.
Formulation :	Liquid in PBS containing 50% glycerol, 0.5% BSA and 0.02% sodium azide.
Source :	Rabbit
Dilution :	Western Blot: 1/500 - 1/2000. ELISA: 1/5000. Not yet tested in other applications.
Purification :	The antibody was affinity-purified from rabbit antiserum by affinity-chromatography using epitope-specific immunogen.
Concentration :	1 mg/ml
Storage_stability :	-20°C/1 year
Msds :	<a href="#">MSDS_Antibody.pdf</a>
Other_name :	CCT7; CCTH; NIP7-1; T-complex protein 1 subunit eta; TCP-1-eta; CCT-eta; HIV-1 Nef-interacting protein
Molecular Weight :	59KD

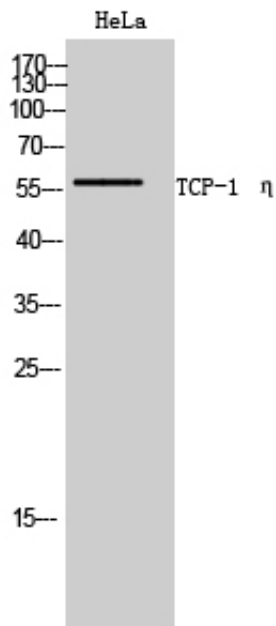


**专注二抗产品**

Biodragon旗下品牌

---

## Product Images



Western Blot analysis of HeLa cells using TCP-1  $\eta$   
Polyclonal Antibody