



## TCP-1 $\theta$ Polyclonal Antibody

Catalog_no :	<u>AT4587</u>
Applications :	<u>WB,ELISA</u>
Reactivity :	<u>Human,Mouse</u>
Category :	<u>抗原抗体</u>
Size :	<u>100<math>\mu</math>g/50<math>\mu</math>g/20<math>\mu</math>g</u>
Gene_name :	<u>CCT8</u>
Protein_name :	<u>T-complex protein 1 subunit theta</u>
Humangene_id :	<u><a href="#">10694</a></u>
Humanswissprot_no :	<u><a href="#">P50990</a></u>
Mousegene_id :	<u><a href="#">12469</a></u>
Mouseswissprot_no :	<u><a href="#">P42932</a></u>
Immunogen :	<u>The antiserum was produced against synthesized peptide derived from human CCT8. AA range:361-410</u>
Specificity :	<u>TCP-1 <math>\theta</math> Polyclonal Antibody detects endogenous levels of TCP-1 <math>\theta</math> protein.</u>
Formulation :	<u>Liquid in PBS containing 50% glycerol, 0.5% BSA and 0.02% sodium azide.</u>
Source :	<u>Rabbit</u>
Dilution :	<u>Western Blot: 1/500 - 1/2000. ELISA: 1/5000. Not yet tested in other applications.</u>
Purification :	<u>The antibody was affinity-purified from rabbit antiserum by affinity-chromatography using epitope-specific immunogen.</u>
Concentration :	<u>1 mg/ml</u>
Storage_stability :	<u>-20°C/1 year</u>
Msds :	<u><a href="#">MSDS_Antibody.pdf</a></u>
Other_name :	<u>CCT8; C21orf112; CCTQ; KIAA0002; T-complex protein 1 subunit theta; TCP-1-theta; CCT-theta; Renal carcinoma antigen NY-REN-15</u>
Molecular Weight :	<u>60KD</u>

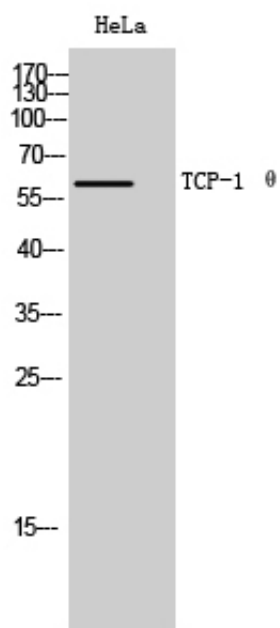


**专注二抗产品**

Biodragon旗下品牌

---

## Product Images



Western Blot analysis of HeLa cells using TCP-1 ̸ Polyclonal Antibody