

TDE1 Polyclonal Antibody

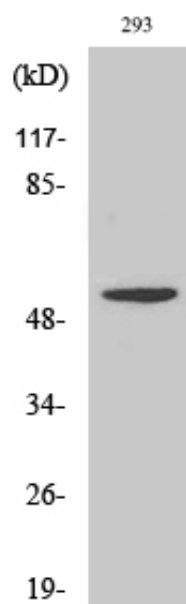
Catalog_no :	AT4591
Applications :	WB,IHC-p,IF,ELISA
Reactivity :	Human,Mouse,Rat
Category :	抗原抗体
Size :	100µg/50µg/20µg
Gene_name :	SERINC3
Protein_name :	Serine incorporator 3
Humangene_id :	10955
Humanswissprot_no :	Q13530
Mousegene_id :	26943
Mouseswissprot_no :	Q9QZ19
Immunogen :	The antiserum was produced against synthesized peptide derived from human SERC3. AA range:361-410
Specificity :	TDE1 Polyclonal Antibody detects endogenous levels of TDE1 protein.
Formulation :	Liquid in PBS containing 50% glycerol, 0.5% BSA and 0.02% sodium azide.
Source :	Rabbit
Dilution :	Western Blot: 1/500 - 1/2000. Immunohistochemistry: 1/100 - 1/300. Immunofluorescence: 1/200 - 1/1000. ELISA: 1/20000. Not yet tested in other applications.
Purification :	The antibody was affinity-purified from rabbit antiserum by affinity-chromatography using epitope-specific immunogen.
Concentration :	1 mg/ml
Storage_stability :	-20°C/1 year
Msds :	MSDS_Antibody.pdf
Other_name :	SERINC3; DIFF33; TDE1; SBBI99; Serine incorporator 3; Tumor differentially expressed protein 1



Molecular
Weight :

52KD

Product Images



Western Blot analysis of various cells using TDE1 Polyclonal Antibody