

TDE2L Polyclonal Antibody

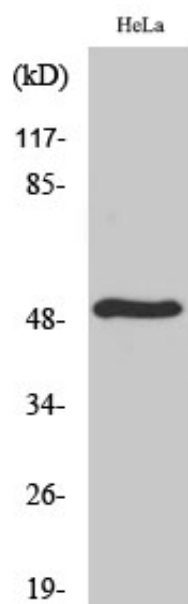
Catalog_no :	AT4592
Applications :	WB,IHC-p,IF,ELISA
Reactivity :	Human,Mouse,Rat
Category :	抗原抗体
Size :	100µg/50µg/20µg
Gene_name :	SERINC2
Protein_name :	Serine incorporator 2
Humangene_id :	347735
Humanswissprot_no :	Q96SA4
Mousegene_id :	230779
Mouseswissprot_no :	Q8K0E7
Immunogen :	The antiserum was produced against synthesized peptide derived from human SERC2. AA range:341-390
Specificity :	TDE2L Polyclonal Antibody detects endogenous levels of TDE2L protein.
Formulation :	Liquid in PBS containing 50% glycerol, 0.5% BSA and 0.02% sodium azide.
Source :	Rabbit
Dilution :	Western Blot: 1/500 - 1/2000. Immunohistochemistry: 1/100 - 1/300. Immunofluorescence: 1/200 - 1/1000. ELISA: 1/40000. Not yet tested in other applications.
Purification :	The antibody was affinity-purified from rabbit antiserum by affinity-chromatography using epitope-specific immunogen.
Concentration :	1 mg/ml
Storage_stability :	-20°C/1 year
Msds :	MSDS_Antibody.pdf
Other_name :	SERINC2; TDE2L; FKSG84; Serine incorporator 2; Tumor differentially expressed protein 2-like



Molecular
Weight :

55KD

Product Images



Western Blot analysis of various cells using TDE2L Polyclonal Antibody