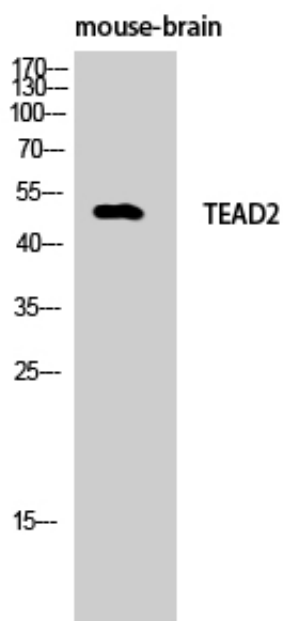




## TEF-4 Polyclonal Antibody

Catalog_no :	<u>AT4597</u>
Applications :	<u>WB,IHC-p,IF,ELISA</u>
Reactivity :	<u>Human,Mouse</u>
Category :	<u>抗原抗体</u>
Size :	<u>100µg/50µg/20µg</u>
Gene_name :	<u>TEAD2</u>
Protein_name :	<u>Transcriptional enhancer factor TEF-4</u>
Humangene_id :	<u><a href="#">8463</a></u>
Humanswissprot_no :	<u><a href="#">Q15562</a></u>
Mousegene_id :	<u><a href="#">21677</a></u>
Mouseswissprot_no :	<u><a href="#">P48301</a></u>
Immunogen :	<u>The antiserum was produced against synthesized peptide derived from human TEAD2. AA range:71-120</u>
Specificity :	<u>TEF-4 Polyclonal Antibody detects endogenous levels of TEF-4 protein.</u>
Formulation :	<u>Liquid in PBS containing 50% glycerol, 0.5% BSA and 0.02% sodium azide.</u>
Source :	<u>Rabbit</u>
Dilution :	<u>Immunohistochemistry: 1/100 - 1/300. Immunofluorescence: 1/200 - 1/1000. ELISA: 1/20000. Not yet tested in other applications.</u>
Purification :	<u>The antibody was affinity-purified from rabbit antiserum by affinity-chromatography using epitope-specific immunogen.</u>
Concentration :	<u>1 mg/ml</u>
Storage_stability :	<u>-20°C/1 year</u>
Msds :	<u><a href="#">MSDS_Antibody.pdf</a></u>
Other_name :	<u>TEAD2; TEF4; Transcriptional enhancer factor TEF-4; TEA domain family member 2; TEAD-2</u>

## Product Images



Western Blot analysis of mouse-brain cells using TEF-4 Polyclonal Antibody cells nucleus extracted by Minute TM Cytoplasmic and Nuclear Fractionation kit (SC-003, Inventbiotech, MN, USA).