

TEL Polyclonal Antibody

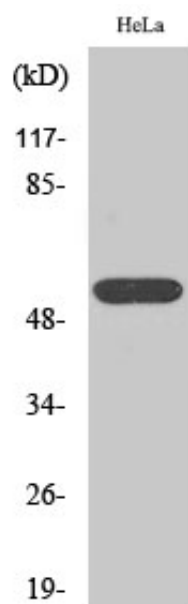
Catalog_no :	AT4599
Applications :	WB,IHC-p,IF,ELISA
Reactivity :	Human,Mouse,Rat
Category :	抗原抗体
Size :	100µg/50µg/20µg
Gene_name :	ETV6
Protein_name :	Transcription factor ETV6
Humangene_id :	2120
Humanswissprot_no :	P41212
Mousegene_id :	14011
Mouseswissprot_no :	P97360
Immunogen :	The antiserum was produced against synthesized peptide derived from human ETV6. AA range:371-420
Specificity :	TEL Polyclonal Antibody detects endogenous levels of TEL protein.
Formulation :	Liquid in PBS containing 50% glycerol, 0.5% BSA and 0.02% sodium azide.
Source :	Rabbit
Dilution :	Western Blot: 1/500 - 1/2000. Immunohistochemistry: 1/100 - 1/300. Immunofluorescence: 1/200 - 1/1000. ELISA: 1/5000. Not yet tested in other applications.
Purification :	The antibody was affinity-purified from rabbit antiserum by affinity-chromatography using epitope-specific immunogen.
Concentration :	1 mg/ml
Storage_stability :	-20°C/1 year
Msds :	MSDS_Antibody.pdf
Other_name :	ETV6; TEL; TEL1; Transcription factor ETV6; ETS translocation variant 6; ETS-related protein Tel1; Tel



Molecular
Weight :

53KD

Product Images



Western Blot analysis of various cells using TEL Polyclonal Antibody