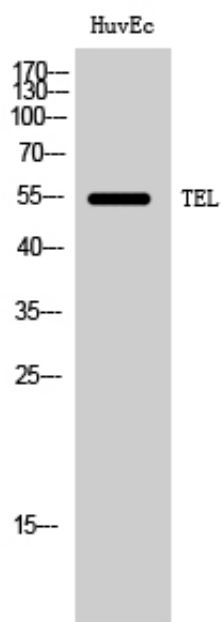


TEL Polyclonal Antibody

Catalog_no :	AT4600
Applications :	WB,ELISA
Reactivity :	Human
Category :	抗原抗体
Size :	100µg/50µg/20µg
Gene_name :	ETV6
Protein_name :	Transcription factor ETV6
Humangene_id :	2120
Humanswissprot_no :	P41212
Immunogen :	The antiserum was produced against synthesized peptide derived from human Tel. AA range:223-272
Specificity :	TEL Polyclonal Antibody detects endogenous levels of TEL protein.
Formulation :	Liquid in PBS containing 50% glycerol, 0.5% BSA and 0.02% sodium azide.
Source :	Rabbit
Dilution :	Western Blot: 1/500 - 1/2000. ELISA: 1/10000. Not yet tested in other applications.
Purification :	The antibody was affinity-purified from rabbit antiserum by affinity-chromatography using epitope-specific immunogen.
Concentration :	1 mg/ml
Storage_stability :	-20°C/1 year
Msds :	MSDS_Antibody.pdf
Other_name :	ETV6; TEL; TEL1; Transcription factor ETV6; ETS translocation variant 6; ETS-related protein Tel1; Tel
Molecular Weight :	55KD

Product Images



Western Blot analysis of HuvEc cells using TEL Polyclonal Antibody