



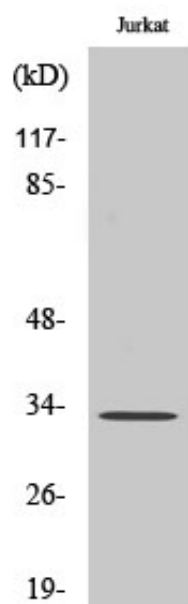
TFIIE- β Polyclonal Antibody

Catalog_no :	AT4616
Applications :	WB,IHC-p,ELISA
Reactivity :	Human,Mouse
Category :	抗原抗体
Size :	100 μ g/50 μ g/20 μ g
Gene_name :	GTF2E2
Protein_name :	Transcription initiation factor IIE subunit beta
Humangene_id :	2961
Humanswissprot_no :	P29084
Mousegene_id :	68153
Mouseswissprot_no :	Q9D902
Immunogen :	The antiserum was produced against synthesized peptide derived from human TF2E2. AA range:151-200
Specificity :	TFIIE- β Polyclonal Antibody detects endogenous levels of TFIIE- β protein.
Formulation :	Liquid in PBS containing 50% glycerol, 0.5% BSA and 0.02% sodium azide.
Source :	Rabbit
Dilution :	Western Blot: 1/500 - 1/2000. Immunohistochemistry: 1/100 - 1/300. ELISA: 1/20000. Not yet tested in other applications.
Purification :	The antibody was affinity-purified from rabbit antiserum by affinity-chromatography using epitope-specific immunogen.
Concentration :	1 mg/ml
Storage_stability :	-20°C/1 year
Msds :	MSDS_Antibody.pdf
Other_name :	GTF2E2; TF2E2; Transcription initiation factor IIE subunit beta; TFIIE-beta; General transcription factor IIE subunit 2
Molecular	33KD



Weight :

Product Images



Western Blot analysis of various cells using TFIIE- β Polyclonal Antibody cells nucleus extracted by Minute TM Cytoplasmic and Nuclear Fractionation kit (SC-003, Inventbiotech, MN, USA).