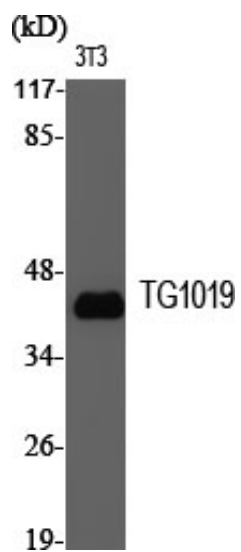


TG1019 Polyclonal Antibody

| | |
|---------------------|---|
| Catalog_no : | AT4624 |
| Applications : | WB,IHC-p,IF,ELISA |
| Reactivity : | Human |
| Category : | 抗原抗体 |
| Size : | 100µg/50µg/20µg |
| Gene_name : | OXER1 |
| Protein_name : | Oxoeicosanoid receptor 1 |
| Humangene_id : | 165140 |
| Humanswissprot_no : | Q8TDS5 |
| Immunogen : | The antiserum was produced against synthesized peptide derived from human OXER1. AA range:212-261 |
| Specificity : | TG1019 Polyclonal Antibody detects endogenous levels of TG1019 protein. |
| Formulation : | Liquid in PBS containing 50% glycerol, 0.5% BSA and 0.02% sodium azide. |
| Source : | Rabbit |
| Dilution : | Western Blot: 1/500 - 1/2000. Immunohistochemistry: 1/100 - 1/300. Immunofluorescence: 1/200 - 1/1000. ELISA: 1/10000. Not yet tested in other applications. |
| Purification : | The antibody was affinity-purified from rabbit antiserum by affinity-chromatography using epitope-specific immunogen. |
| Concentration : | 1 mg/ml |
| Storage_stability : | -20°C/1 year |
| Msds : | MSDS_Antibody.pdf |
| Other_name : | OXER1; GPR170; TG1019; Oxoeicosanoid receptor 1; 5-oxo-ETE G-protein coupled receptor; G-protein coupled receptor 170; G-protein coupled receptor R527; G-protein coupled receptor TG1019 |
| Molecular Weight : | 46KD |

Product Images



Western Blot analysis of various cells using TG1019 Polyclonal Antibody