

TGF $\alpha$  Polyclonal Antibody

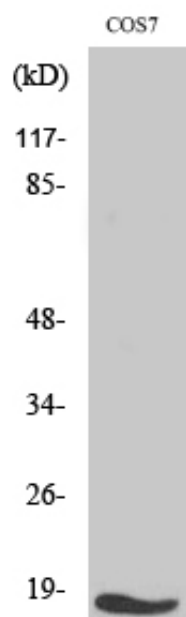
|                     |  |
|---------------------|--|
| Catalog_no :        | AT4626   |
| Applications :      | WB,IHC-p,ELISA   |
| Reactivity :        | Human,Mouse,Rat,Monkey   |
| Category :          | 抗原抗体   |
| Size :              | 100 $\mu$ g/50 $\mu$ g/20 $\mu$ g  |
| Gene_name :         | TGFA   |
| Protein_name :      | Protransforming growth factor alpha  |
| Humangene_id :      | <a href="#">7039</a>   |
| Humanswissprot_no : | <a href="#">P01135</a>   |
| Mousegene_id :      | <a href="#">21802</a>  |
| Mouseswissprot_no : | <a href="#">P48030</a>   |
| Ratgene_id :        | <a href="#">24827</a>  |
| Ratswissprot_no :   | <a href="#">P01134</a>   |
| Immunogen :         | The antiserum was produced against synthesized peptide derived from human TGF alpha. AA range:111-160                    |
| Specificity :       | TGF $\alpha$ Polyclonal Antibody detects endogenous levels of TGF $\alpha$ protein.                                      |
| Formulation :       | Liquid in PBS containing 50% glycerol, 0.5% BSA and 0.02% sodium azide.  |
| Source :            | Rabbit   |
| Dilution :          | Western Blot: 1/500 - 1/2000. Immunohistochemistry: 1/100 - 1/300. ELISA: 1/10000. Not yet tested in other applications. |
| Purification :      | The antibody was affinity-purified from rabbit antiserum by affinity-chromatography using epitope-specific immunogen.    |
| Concentration :     | 1 mg/ml  |
| Storage_stability : | -20°C/1 year   |
| Msds :              | MSDS_Antibody.pdf  |



Other\_name : TGFA; Protransforming growth factor alpha

Molecular Weight : 10KD

## Product Images



Western Blot analysis of various cells using TGF $\alpha$  Polyclonal Antibody