



## TGFβ RI Polyclonal Antibody

Catalog_no :	<u>AT4627</u>
Applications :	<u>WB,IF,ELISA</u>
Reactivity :	<u>Human,Mouse,Rat</u>
Category :	<u>抗原抗体</u>
Size :	<u>100μg/50μg/20μg</u>
Gene_name :	<u>TGFBR1</u>
Protein_name :	<u>TGF-beta receptor type-1</u>
Humangene_id :	<u><a href="#">7046</a></u>
Humanswissprot_no :	<u><a href="#">P36897</a></u>
Mousegene_id :	<u><a href="#">21812</a></u>
Mouseswissprot_no :	<u><a href="#">Q64729</a></u>
Ratswissprot_no :	<u><a href="#">P80204</a></u>
Immunogen :	<u>The antiserum was produced against synthesized peptide derived from human TGF beta Receptor I. AA range:131-180</u>
Specificity :	<u>TGFβ RI Polyclonal Antibody detects endogenous levels of TGFβ RI protein.</u>
Formulation :	<u>Liquid in PBS containing 50% glycerol, 0.5% BSA and 0.02% sodium azide.</u>
Source :	<u>Rabbit</u>
Dilution :	<u>Western Blot: 1/500 - 1/2000. Immunofluorescence: 1/200 - 1/1000. ELISA: 1/10000. Not yet tested in other applications.</u>
Purification :	<u>The antibody was affinity-purified from rabbit antiserum by affinity-chromatography using epitope-specific immunogen.</u>
Concentration :	<u>1 mg/ml</u>
Storage_stability :	<u>-20°C/1 year</u>
Msds :	<u><a href="#">MSDS_Antibody.pdf</a></u>
Other_name :	<u>TGFBR1; ALK5; SKR4; TGF-beta receptor type-1; TGFR-1; Activin A receptor type II-like</u>



protein kinase of 53kD; Activin receptor-like kinase 5; ALK-5; ALK5; Serine/threonine-protein kinase receptor R4; SKR4; TGF-beta type I receptor; Transfor

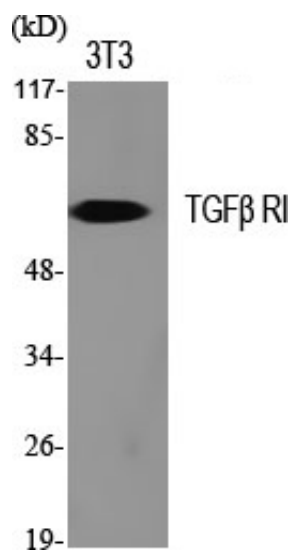
---

Molecular  
Weight :

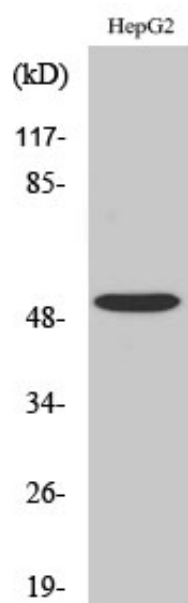
56KD

---

## Product Images



Western Blot analysis of various cells using TGFβ RI  
Polyclonal Antibody diluted at 1 : 500



Western Blot analysis of COLO205 cells using TGFβ RI  
Polyclonal Antibody diluted at 1 : 500