



TGFβ RII Polyclonal Antibody

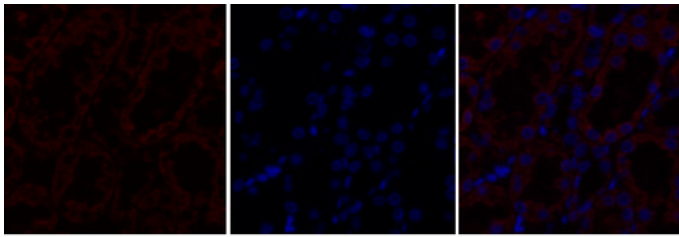
Catalog_no :	<u>AT4629</u>
Applications :	<u>IF,WB,IHC-p,ELISA</u>
Reactivity :	<u>Human,Mouse,Rat</u>
Category :	<u>抗原抗体</u>
Size :	<u>100μg/50μg/20μg</u>
Gene_name :	<u>TGFBR2</u>
Protein_name :	<u>TGF-beta receptor type-2</u>
Humangene_id :	<u>7048</u>
Humanswissprot_no :	<u>P37173</u>
Mousegene_id :	<u>21813</u>
Mouseswissprot_no :	<u>Q62312</u>
Ratgene_id :	<u>81810</u>
Ratswissprot_no :	<u>P38438</u>
Immunogen :	<u>The antiserum was produced against synthesized peptide derived from human TGF beta Receptor II. AA range:91-140</u>
Specificity :	<u>TGFβ RII Polyclonal Antibody detects endogenous levels of TGFβ RII protein.</u>
Formulation :	<u>Liquid in PBS containing 50% glycerol, 0.5% BSA and 0.02% sodium azide.</u>
Source :	<u>Rabbit</u>
Dilution :	<u>IF: 1:50-200 Western Blot: 1/500 - 1/2000. Immunohistochemistry: 1/100 - 1/300. ELISA: 1/20000. Not yet tested in other applications.</u>
Purification :	<u>The antibody was affinity-purified from rabbit antiserum by affinity-chromatography using epitope-specific immunogen.</u>
Concentration :	<u>1 mg/ml</u>
Storage_stability :	<u>-20°C/1 year</u>
Msds :	<u>MSDS_Antibody.pdf</u>



Other_name : TGFBR2; TGF-beta receptor type-2; TGFR-2; TGF-beta type II receptor; Transforming growth factor-beta receptor type II; TGF-beta receptor type II; TbetaR-II

Molecular Weight : 65KD

Product Images

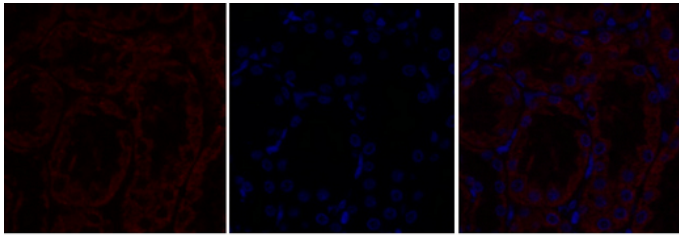


Immunofluorescence analysis of rat-kidney tissue. 1, TGF β RII Polyclonal Antibody (red) was diluted at 1:200 (4°C, overnight). 2, Cy3 labeled Secondary antibody was diluted at 1:300 (room temperature, 50min). 3, Picture B: DAPI (blue) 10min. Picture A: Target. Picture B: DAPI. Picture C: merge of A+B

A

B

C

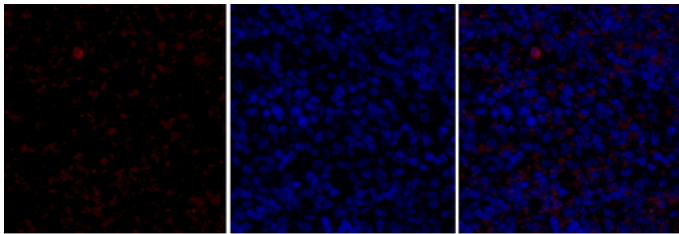


Immunofluorescence analysis of rat-kidney tissue. 1, TGF β RII Polyclonal Antibody (red) was diluted at 1:200 (4°C, overnight). 2, Cy3 labeled Secondary antibody was diluted at 1:300 (room temperature, 50min). 3, Picture B: DAPI (blue) 10min. Picture A: Target. Picture B: DAPI. Picture C: merge of A+B

A

B

C

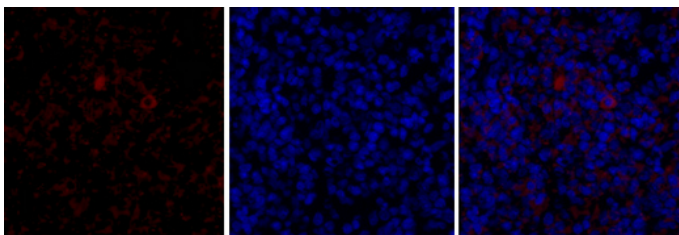


Immunofluorescence analysis of rat-spleen tissue. 1, TGF β RII Polyclonal Antibody (red) was diluted at 1:200 (4°C, overnight). 2, Cy3 labeled Secondary antibody was diluted at 1:300 (room temperature, 50min). 3, Picture B: DAPI (blue) 10min. Picture A: Target. Picture B: DAPI. Picture C: merge of A+B

A

B

C

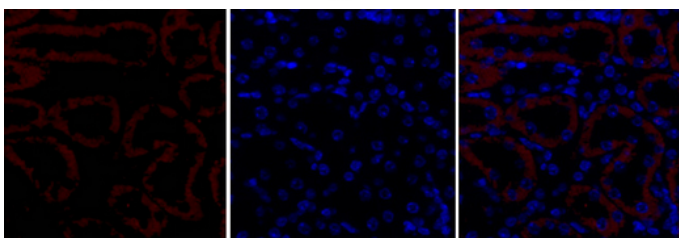


Immunofluorescence analysis of rat-spleen tissue. 1, TGF β RII Polyclonal Antibody (red) was diluted at 1:200 (4°C, overnight). 2, Cy3 labeled Secondary antibody was diluted at 1:300 (room temperature, 50min). 3, Picture B: DAPI (blue) 10min. Picture A: Target. Picture B: DAPI. Picture C: merge of A+B

A

B

C

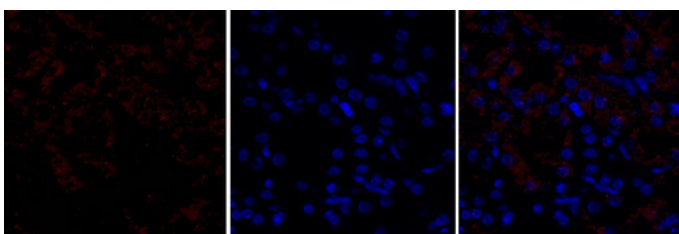


Immunofluorescence analysis of mouse-kidney tissue. 1, TGF β RII Polyclonal Antibody (red) was diluted at 1:200 (4°C, overnight). 2, Cy3 labeled Secondary antibody was diluted at 1:300 (room temperature, 50min). 3, Picture B: DAPI (blue) 10min. Picture A: Target. Picture B: DAPI. Picture C: merge of A+B

A

B

C



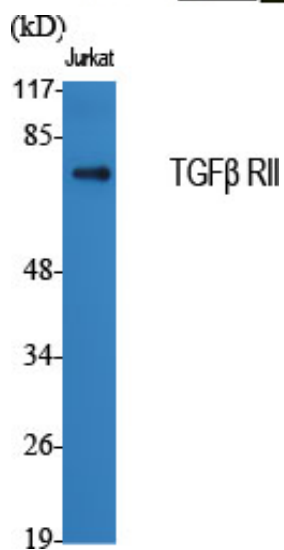
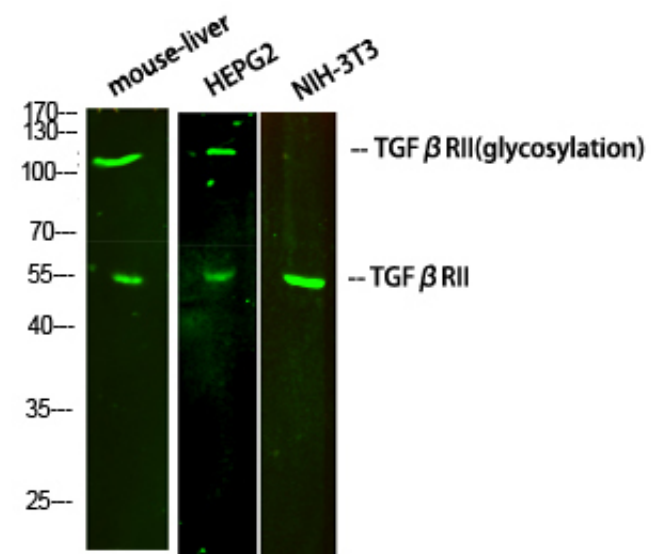
Immunofluorescence analysis of mouse-kidney tissue. 1, TGF β RII Polyclonal Antibody (red) was diluted at 1:200 (4°C, overnight). 2, Cy3 labeled Secondary antibody was diluted at 1:300 (room temperature, 50min). 3, Picture B: DAPI (blue) 10min. Picture A: Target. Picture B: DAPI. Picture C: merge of A+B

A

B

C

Western Blot analysis of various cells using primary antibody diluted at 1:1000 (4°C overnight). Secondary antibody : Goat Anti-rabbit IgG IRDye 800 (diluted at 1:5000, 25°C, 1 hour)



Western Blot analysis of various cells using TGFβ RII Polyclonal Antibody diluted at 1 : 2000