

## TH Polyclonal Antibody

Catalog_no :	AT4637
Applications :	WB,IHC-p,IF,ELISA
Reactivity :	Human,Mouse,Rat
Category :	抗原抗体
Size :	100µg/50µg/20µg
Gene_name :	TH
Protein_name :	Tyrosine 3-monooxygenase
Humangene_id :	<a href="#">7054</a>
Humanswissprot_no :	<a href="#">P07101</a>
Mousegene_id :	<a href="#">21823</a>
Mouseswissprot_no :	<a href="#">P24529</a>
Ratgene_id :	<a href="#">25085</a>
Ratswissprot_no :	<a href="#">P04177</a>
Immunogen :	The antiserum was produced against synthesized peptide derived from human Tyrosine Hydroxylase. AA range:41-90
Specificity :	TH Polyclonal Antibody detects endogenous levels of TH protein.
Formulation :	Liquid in PBS containing 50% glycerol, 0.5% BSA and 0.02% sodium azide.
Source :	Rabbit
Dilution :	Western Blot: 1/500 - 1/2000. Immunohistochemistry: 1/100 - 1/300. Immunofluorescence: 1/200 - 1/1000. ELISA: 1/20000. Not yet tested in other applications.
Purification :	The antibody was affinity-purified from rabbit antiserum by affinity-chromatography using epitope-specific immunogen.
Concentration :	1 mg/ml
Storage_stability :	-20°C/1 year

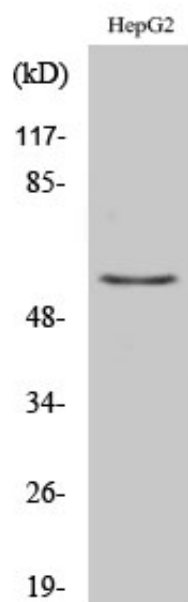


MsdS : MSDS\_Antibody.pdf

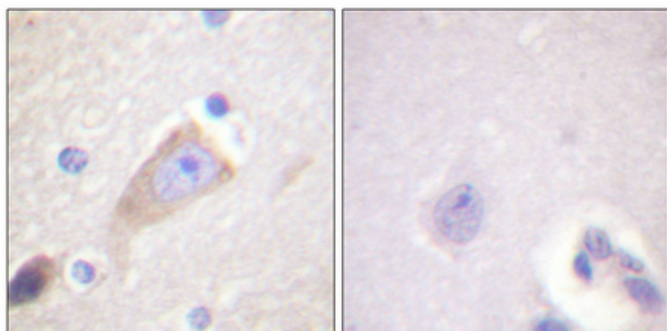
Other\_name : TH; TYH; Tyrosine 3-monooxygenase; Tyrosine 3-hydroxylase; TH

Molecular Weight : 55KD

## Product Images



Western Blot analysis of various cells using TH Polyclonal Antibody



Immunohistochemical analysis of paraffin-embedded Human brain. Antibody was diluted at 1:100(4°,overnight). High-pressure and temperature Tris-EDTA,pH8.0 was used for antigen retrieval. Negative contrl (right) obtaned from antibody was pre-absorbed by immunogen peptide.