

## TH Polyclonal Antibody

Catalog_no :	AT4638
Applications :	WB,IHC-p,IF,ELISA
Reactivity :	Human,Mouse,Rat
Category :	抗原抗体
Size :	100µg/50µg/20µg
Gene_name :	TH
Protein_name :	Tyrosine 3-monooxygenase
Humangene_id :	<a href="#">7054</a>
Humanswissprot_no :	<a href="#">P07101</a>
Mousegene_id :	<a href="#">21823</a>
Mouseswissprot_no :	<a href="#">P24529</a>
Ratgene_id :	<a href="#">25085</a>
Ratswissprot_no :	<a href="#">P04177</a>
Immunogen :	The antiserum was produced against synthesized peptide derived from human Tyrosine Hydroxylase. AA range:10-59
Specificity :	TH Polyclonal Antibody detects endogenous levels of TH protein.
Formulation :	Liquid in PBS containing 50% glycerol, 0.5% BSA and 0.02% sodium azide.
Source :	Rabbit
Dilution :	Western Blot: 1/500 - 1/2000. Immunohistochemistry: 1/100 - 1/300. Immunofluorescence: 1/200 - 1/1000. ELISA: 1/10000. Not yet tested in other applications.
Purification :	The antibody was affinity-purified from rabbit antiserum by affinity-chromatography using epitope-specific immunogen.
Concentration :	1 mg/ml
Storage_stability :	-20°C/1 year

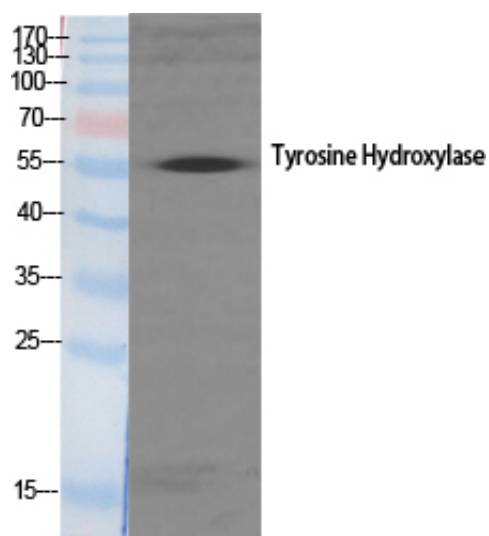


Msd : MSDS\_Antibody.pdf

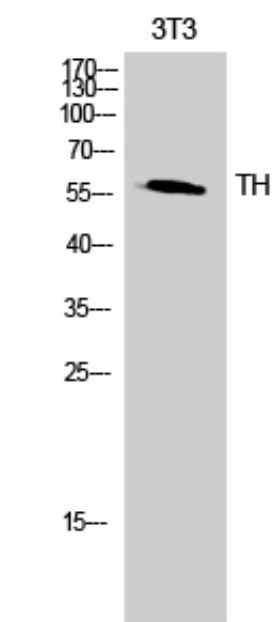
Other\_name : TH; TYH; Tyrosine 3-monooxygenase; Tyrosine 3-hydroxylase; TH

Molecular Weight : 56KD

## Product Images

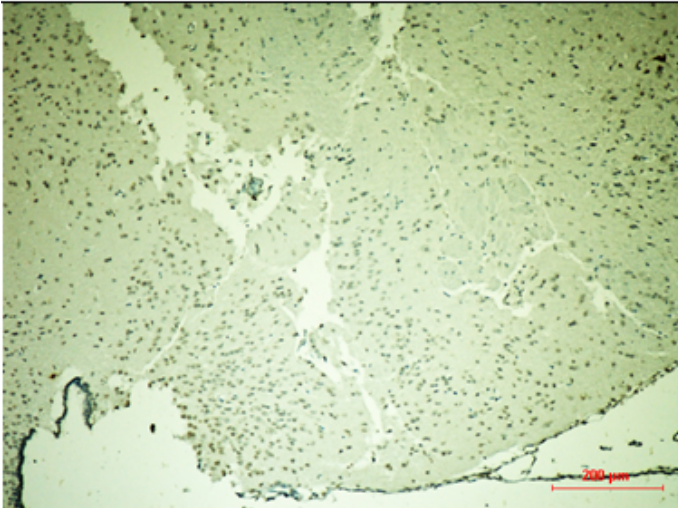


Western Blot analysis of various cells using TH Polyclonal Antibody



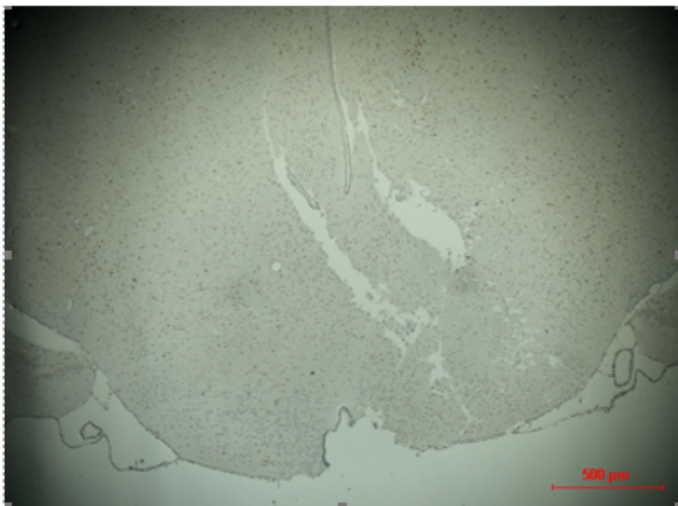
Western Blot analysis of 3T3 cells using TH Polyclonal Antibody

The picture was kindly provided by our customer



mouse-brain

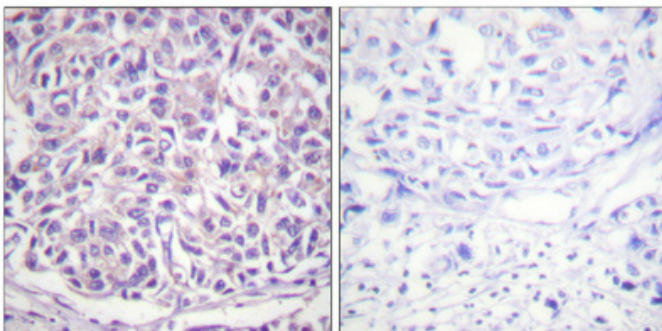
Sun Yat-Sen University



mouse-brain

Sun Yat-Sen University

The picture was kindly provided by our customer



Immunohistochemical analysis of paraffin-embedded Human breast cancer. Antibody was diluted at 1:100(4°, overnight). High-pressure and temperature Tris-EDTA, pH8.0 was used for antigen retrieval. Negative contrl (right) obtained from antibody was pre-absorbed by immunogen peptide.