

TH Polyclonal Antibody

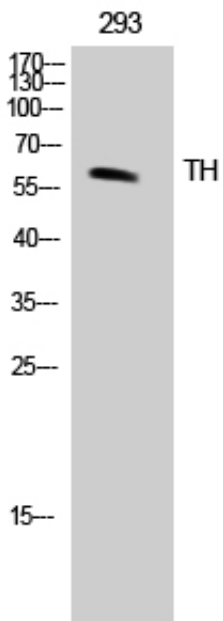
Catalog_no :	AT4640
Applications :	WB,IHC-p,ELISA
Reactivity :	Human,Mouse,Rat,Monkey
Category :	抗原抗体
Size :	100µg/50µg/20µg
Gene_name :	TH
Protein_name :	Tyrosine 3-monooxygenase
Humangene_id :	7054
Humanswissprot_no :	P07101
Mousegene_id :	21823
Mouseswissprot_no :	P24529
Ratgene_id :	25085
Ratswissprot_no :	P04177
Immunogen :	The antiserum was produced against synthesized peptide derived from human Tyrosine Hydroxylase. AA range:1-50
Specificity :	TH Polyclonal Antibody detects endogenous levels of TH protein.
Formulation :	Liquid in PBS containing 50% glycerol, 0.5% BSA and 0.02% sodium azide.
Source :	Rabbit
Dilution :	Western Blot: 1/500 - 1/2000. Immunohistochemistry: 1/100 - 1/300. ELISA: 1/20000. Not yet tested in other applications.
Purification :	The antibody was affinity-purified from rabbit antiserum by affinity-chromatography using epitope-specific immunogen.
Concentration :	1 mg/ml
Storage_stability :	-20°C/1 year
Msds :	MSDS_Antibody.pdf



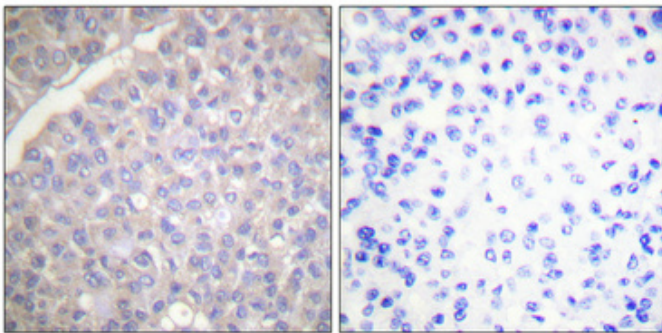
Other_name : TH; TYH; Tyrosine 3-monooxygenase; Tyrosine 3-hydroxylase; TH

Molecular Weight : 60KD

Product Images



Western Blot analysis of 293 cells using TH Polyclonal Antibody



Immunohistochemical analysis of paraffin-embedded Human breast cancer. Antibody was diluted at 1:100(4°, overnight). High-pressure and temperature Tris-EDTA, pH8.0 was used for antigen retrieval. Negative control (right) obtained from antibody was pre-absorbed by immunogen peptide.