

THAP4 Polyclonal Antibody

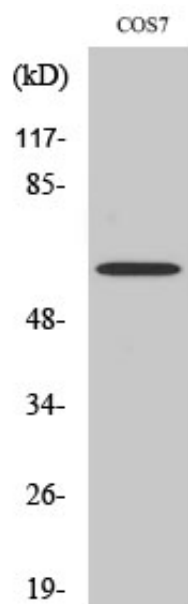
Catalog_no :	AT4641
Applications :	WB,IHC-p,ELISA
Reactivity :	Human,Mouse,Rat,Monkey
Category :	抗原抗体
Size :	100µg/50µg/20µg
Gene_name :	THAP4
Protein_name :	THAP domain-containing protein 4
Humangene_id :	51078
Humanswissprot_no :	Q8WY91
Mousegene_id :	67026
Mouseswissprot_no :	Q6P3Z3
Ratgene_id :	363291
Ratswissprot_no :	Q642B6
Immunogen :	The antiserum was produced against synthesized peptide derived from human THAP4. AA range:341-390
Specificity :	THAP4 Polyclonal Antibody detects endogenous levels of THAP4 protein.
Formulation :	Liquid in PBS containing 50% glycerol, 0.5% BSA and 0.02% sodium azide.
Source :	Rabbit
Dilution :	Western Blot: 1/500 - 1/2000. Immunohistochemistry: 1/100 - 1/300. ELISA: 1/40000. Not yet tested in other applications.
Purification :	The antibody was affinity-purified from rabbit antiserum by affinity-chromatography using epitope-specific immunogen.
Concentration :	1 mg/ml
Storage_stability :	-20°C/1 year
Msds :	MSDS_Antibody.pdf



Other_name : THAP4; CGI-36; PP238; THAP domain-containing protein 4

Molecular Weight : 63KD

Product Images



Western Blot analysis of various cells using THAP4 Polyclonal Antibody