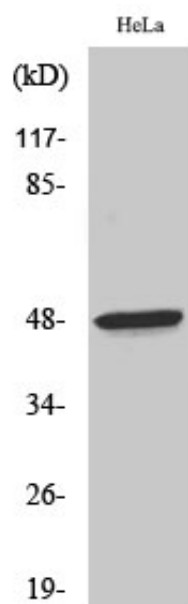


Thrombin R Polyclonal Antibody

Catalog_no :	AT4645
Applications :	WB,IHC-p,ELISA
Reactivity :	Human
Category :	抗原抗体
Size :	100µg/50µg/20µg
Gene_name :	F2R
Protein_name :	Proteinase-activated receptor 1
Humangene_id :	2149
Humanswissprot_no :	P25116
Immunogen :	The antiserum was produced against synthesized peptide derived from human Thrombin Receptor. AA range:10-59
Specificity :	Thrombin R Polyclonal Antibody detects endogenous levels of Thrombin R protein.
Formulation :	Liquid in PBS containing 50% glycerol, 0.5% BSA and 0.02% sodium azide.
Source :	Rabbit
Dilution :	Western Blot: 1/500 - 1/2000. ELISA: 1/5000. Not yet tested in other applications.
Purification :	The antibody was affinity-purified from rabbit antiserum by affinity-chromatography using epitope-specific immunogen.
Concentration :	1 mg/ml
Storage_stability :	-20°C/1 year
Msds :	MSDS_Antibody.pdf
Other_name :	F2R; CF2R; PAR1; TR; Proteinase-activated receptor 1; PAR-1; Coagulation factor II receptor; Thrombin receptor
Molecular Weight :	48KD

Product Images



Western Blot analysis of various cells using Thrombin R Polyclonal Antibody