

TIEG2 Polyclonal Antibody

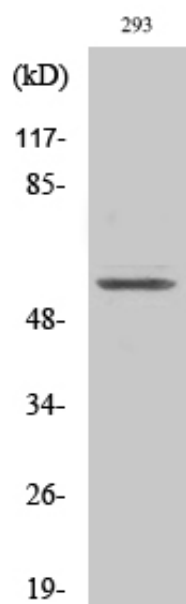
Catalog_no :	AT4653
Applications :	WB,IHC-p,IF,ELISA
Reactivity :	Human,Mouse
Category :	抗原抗体
Size :	100µg/50µg/20µg
Gene_name :	KLF11
Protein_name :	Krüppel-like factor 11
Humangene_id :	8462
Humanswissprot_no :	O14901
Mousegene_id :	194655
Mouseswissprot_no :	Q8K1S5
Immunogen :	The antiserum was produced against synthesized peptide derived from human KLF11. AA range:1-50
Specificity :	TIEG2 Polyclonal Antibody detects endogenous levels of TIEG2 protein.
Formulation :	Liquid in PBS containing 50% glycerol, 0.5% BSA and 0.02% sodium azide.
Source :	Rabbit
Dilution :	Western Blot: 1/500 - 1/2000. Immunohistochemistry: 1/100 - 1/300. Immunofluorescence: 1/200 - 1/1000. ELISA: 1/20000. Not yet tested in other applications.
Purification :	The antibody was affinity-purified from rabbit antiserum by affinity-chromatography using epitope-specific immunogen.
Concentration :	1 mg/ml
Storage_stability :	-20°C/1 year
Msds :	MSDS_Antibody.pdf
Other_name :	KLF11; FKLF; TIEG2; Krüppel-like factor 11; Transforming growth factor-beta-inducible early growth response protein 2; TGFB-inducible early growth response protein 2; TIEG-2



Molecular
Weight :

55KD

Product Images



Western Blot analysis of various cells using TIEG2 Polyclonal Antibody cells nucleus extracted by Minute TM Cytoplasmic and Nuclear Fractionation kit (SC-003, Inventbiotech, MN, USA).