

TIF1 α Polyclonal Antibody

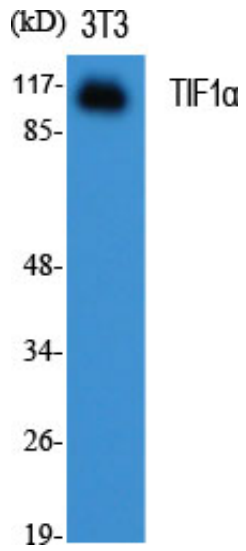
Catalog_no :	AT4654
Applications :	WB,IHC-p,ELISA
Reactivity :	Human,Mouse
Category :	抗原抗体
Size :	100 μ g/50 μ g/20 μ g
Gene_name :	TRIM24
Protein_name :	Transcription intermediary factor 1-alpha
Humangene_id :	8805
Humanswissprot_no :	O15164
Mousegene_id :	21848
Mouseswissprot_no :	Q64127
Immunogen :	The antiserum was produced against synthesized peptide derived from human TRIM24. AA range:1001-1050
Specificity :	TIF1 α Polyclonal Antibody detects endogenous levels of TIF1 α protein.
Formulation :	Liquid in PBS containing 50% glycerol, 0.5% BSA and 0.02% sodium azide.
Source :	Rabbit
Dilution :	Western Blot: 1/500 - 1/2000. Immunohistochemistry: 1/100 - 1/300. ELISA: 1/20000. Not yet tested in other applications.
Purification :	The antibody was affinity-purified from rabbit antiserum by affinity-chromatography using epitope-specific immunogen.
Concentration :	1 mg/ml
Storage_stability :	-20°C/1 year
Msds :	MSDS_Antibody.pdf
Other_name :	TRIM24; RNF82; TIF1; TIF1A; Transcription intermediary factor 1-alpha; TIF1-alpha; E3 ubiquitin-protein ligase TRIM24; RING finger protein 82; Tripartite motif-containing protein 24



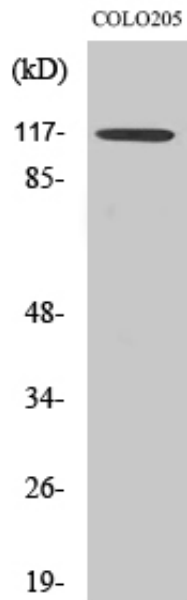
Molecular
Weight :

117KD

Product Images



Western Blot analysis of various cells using TIF1α
Polyclonal Antibody diluted at 1 : 1000



Western Blot analysis of COLO205 cells using TIF1α
Polyclonal Antibody diluted at 1 : 1000. Secondary
antibody was diluted at 1:20000