



TIMP-3 Polyclonal Antibody

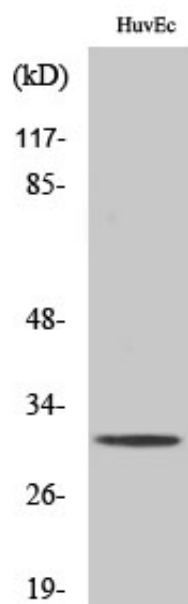
Catalog_no :	AT4660
Applications :	WB,ELISA
Reactivity :	Human,Mouse,Rat
Category :	抗原抗体
Size :	100µg/50µg/20µg
Gene_name :	TIMP3
Protein_name :	Metalloproteinase inhibitor 3
Humangene_id :	7078
Humanswissprot_no :	P35625
Mousegene_id :	21859
Mouseswissprot_no :	P39876
Ratswissprot_no :	P48032
Immunogen :	The antiserum was produced against synthesized peptide derived from human TIMP3. AA range:91-140
Specificity :	TIMP-3 Polyclonal Antibody detects endogenous levels of TIMP-3 protein.
Formulation :	Liquid in PBS containing 50% glycerol, 0.5% BSA and 0.02% sodium azide.
Source :	Rabbit
Dilution :	Western Blot: 1/500 - 1/2000. ELISA: 1/10000. Not yet tested in other applications.
Purification :	The antibody was affinity-purified from rabbit antiserum by affinity-chromatography using epitope-specific immunogen.
Concentration :	1 mg/ml
Storage_stability :	-20°C/1 year
Msds :	MSDS_Antibody.pdf
Other_name :	TIMP3; Metalloproteinase inhibitor 3; Protein MIG-5; Tissue inhibitor of metalloproteinases 3; TIMP-3



Molecular
Weight :

25KD

Product Images



Western Blot analysis of various cells using TIMP-3 Polyclonal Antibody diluted at 1 : 1000. Secondary antibody was diluted at 1:20000