

TIMP-4 Polyclonal Antibody

Catalog_no :	AT4661
Applications :	WB,IHC-p,ELISA
Reactivity :	Human,Mouse,Rat
Category :	抗原抗体
Size :	100µg/50µg/20µg
Gene_name :	TIMP4
Protein_name :	Metalloproteinase inhibitor 4
Humangene_id :	7079
Humanswissprot_no :	Q99727
Mousegene_id :	110595
Mouseswissprot_no :	Q9JHB3
Ratgene_id :	680130
Ratswissprot_no :	P81556
Immunogen :	The antiserum was produced against synthesized peptide derived from human TIMP4. AA range:175-224
Specificity :	TIMP-4 Polyclonal Antibody detects endogenous levels of TIMP-4 protein.
Formulation :	Liquid in PBS containing 50% glycerol, 0.5% BSA and 0.02% sodium azide.
Source :	Rabbit
Dilution :	Western Blot: 1/500 - 1/2000. Immunohistochemistry: 1/100 - 1/300. ELISA: 1/20000. Not yet tested in other applications.
Purification :	The antibody was affinity-purified from rabbit antiserum by affinity-chromatography using epitope-specific immunogen.
Concentration :	1 mg/ml
Storage_stability :	-20°C/1 year
Msds :	MSDS_Antibody.pdf

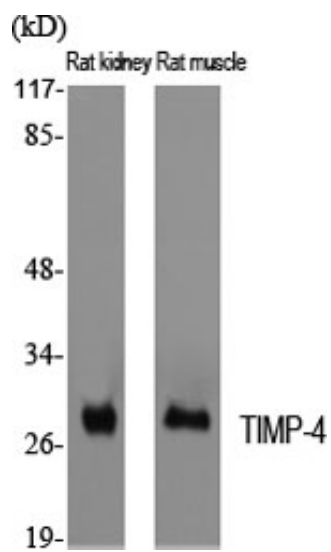


Other_name : TIMP4; Metalloproteinase inhibitor 4; Tissue inhibitor of metalloproteinases 4; TIMP-4

Molecular Weight : 26KD

Weight : _____

Product Images



Western Blot analysis of various cells using TIMP-4 Polyclonal Antibody diluted at 1 : 2000. Secondary antibody was diluted at 1:20000