

TIP60 Polyclonal Antibody

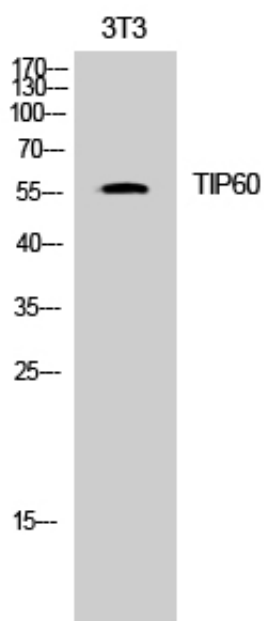
Catalog_no :	AT4666
Applications :	WB,ELISA
Reactivity :	Human,Mouse,Rat
Category :	抗原抗体
Size :	100µg/50µg/20µg
Gene_name :	KAT5
Protein_name :	Histone acetyltransferase KAT5
Humangene_id :	10524
Humanswissprot_no :	Q92993
Mousegene_id :	81601
Mouseswissprot_no :	Q8CHK4
Ratgene_id :	192218
Ratswissprot_no :	Q99MK2
Immunogen :	The antiserum was produced against synthesized peptide derived from human Tip60. AA range:56-105
Specificity :	TIP60 Polyclonal Antibody detects endogenous levels of TIP60 protein.
Formulation :	Liquid in PBS containing 50% glycerol, 0.5% BSA and 0.02% sodium azide.
Source :	Rabbit
Dilution :	Western Blot: 1/500 - 1/2000. ELISA: 1/10000. Not yet tested in other applications.
Purification :	The antibody was affinity-purified from rabbit antiserum by affinity-chromatography using epitope-specific immunogen.
Concentration :	1 mg/ml
Storage_stability :	-20°C/1 year
Msds :	MSDS_Antibody.pdf



Other_name : KAT5; HTATIP; TIP60; Histone acetyltransferase KAT5; 60 kDa Tat-interactive protein; Tip60; Histone acetyltransferase HTATIP; HIV-1 Tat interactive protein; Lysine acetyltransferase 5; cPLA(2)-interacting protein

Molecular Weight : 55KD

Product Images



Western Blot analysis of 3T3 cells using TIP60 Polyclonal Antibody. Secondary antibody was diluted at 1:20000