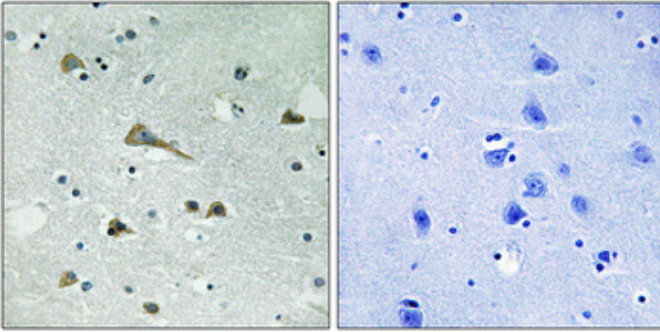




## TIRAP Polyclonal Antibody

Catalog_no :	<u>AT4667</u>
Applications :	<u>IHC-p,WB,ELISA</u>
Reactivity :	<u>Human,Mouse</u>
Category :	<u>抗原抗体</u>
Size :	<u>100µg/50µg/20µg</u>
Gene_name :	<u>TIRAP</u>
Protein_name :	<u>Toll/interleukin-1 receptor domain-containing adapter protein</u>
Humangene_id :	<u><a href="#">114609</a></u>
Humanswissprot_no :	<u><a href="#">P58753</a></u>
Mousegene_id :	<u><a href="#">117149</a></u>
Mouseswissprot_no :	<u><a href="#">Q99JY1</a></u>
Immunogen :	<u>The antiserum was produced against synthesized peptide derived from human TIRAP. AA range:52-101</u>
Specificity :	<u>TIRAP Polyclonal Antibody detects endogenous levels of TIRAP protein.</u>
Formulation :	<u>Liquid in PBS containing 50% glycerol, 0.5% BSA and 0.02% sodium azide.</u>
Source :	<u>Rabbit</u>
Dilution :	<u>WB 1:500-2000 Immunohistochemistry: 1/100 - 1/300. ELISA: 1/20000. Not yet tested in other applications.</u>
Purification :	<u>The antibody was affinity-purified from rabbit antiserum by affinity-chromatography using epitope-specific immunogen.</u>
Concentration :	<u>1 mg/ml</u>
Storage_stability :	<u>-20°C/1 year</u>
Msds :	<u><a href="#">MSDS_Antibody.pdf</a></u>
Other_name :	<u>TIRAP; MAL; Toll/interleukin-1 receptor domain-containing adapter protein; TIR domain-containing adapter protein; Adaptor protein Wyatt; MyD88 adapter-like protein</u>

## Product Images



Immunohistochemical analysis of paraffin-embedded Human brain. Antibody was diluted at 1:100(4°,overnight). High-pressure and temperature Tris-EDTA,pH8.0 was used for antigen retrieval. Negative contrl (right) obtaned from antibody was pre-absorbed by immunogen peptide.