

TIS11B Polyclonal Antibody

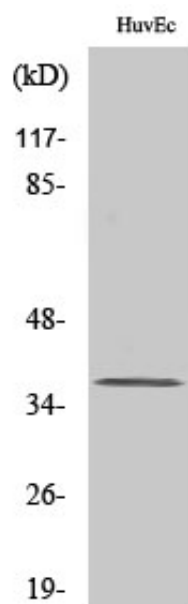
Catalog_no :	<u>AT4668</u>
Applications :	<u>WB,IHC-p,ELISA</u>
Reactivity :	<u>Human,Mouse,Rat</u>
Category :	<u>抗原抗体</u>
Size :	<u>100µg/50µg/20µg</u>
Gene_name :	<u>ZFP36L1</u>
Protein_name :	<u>Zinc finger protein 36 C3H1 type-like 1</u>
Humangene_id	<u>677</u>
:	<u></u>
Humanswissprot	<u>Q07352</u>
_no :	<u></u>
Mousegene_id :	<u>12192</u>
Mouseswissprot	<u>P23950</u>
_no :	<u></u>
Ratgene_id :	<u>29344</u>
Ratswissprot_no	<u>P17431</u>
:	<u></u>
Immunogen :	<u>The antiserum was produced against synthesized peptide derived from human TISB. AA range:58-107</u>
Specificity :	<u>TIS11B Polyclonal Antibody detects endogenous levels of TIS11B protein.</u>
Formulation :	<u>Liquid in PBS containing 50% glycerol, 0.5% BSA and 0.02% sodium azide.</u>
Source :	<u>Rabbit</u>
Dilution :	<u>Western Blot: 1/500 - 1/2000. Immunohistochemistry: 1/100 - 1/300. ELISA: 1/10000. Not yet tested in other applications.</u>
Purification :	<u>The antibody was affinity-purified from rabbit antiserum by affinity-chromatography using epitope-specific immunogen.</u>
Concentration :	<u>1 mg/ml</u>
Storage_stability	<u>-20°C/1 year</u>
:	<u></u>
Msds :	<u>MSDS_Antibody.pdf</u>



Other_name : ZFP36L1; BERG36; BRF1; ERF1; RNF162B; TIS11B; Zinc finger protein 36; C3H1 type-like 1; Butyrate response factor 1; EGF-response factor 1; ERF-1; Protein TIS11B

Molecular Weight : 36KD

Product Images



Western Blot analysis of various cells using TIS11B Polyclonal Antibody. Secondary antibody was diluted at 1:20000