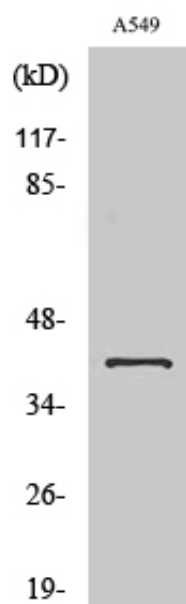




TIS11D Polyclonal Antibody

Catalog_no :	AT4669
Applications :	WB,IHC-p,ELISA
Reactivity :	Human,Mouse
Category :	抗原抗体
Size :	100µg/50µg/20µg
Gene_name :	ZFP36L2
Protein_name :	Zinc finger protein 36 C3H1 type-like 2
Humangene_id :	678
Humanswissprot_no :	P47974
Mouseswissprot_no :	P23949
Immunogen :	The antiserum was produced against synthesized peptide derived from human TISD. AA range:207-256
Specificity :	TIS11D Polyclonal Antibody detects endogenous levels of TIS11D protein.
Formulation :	Liquid in PBS containing 50% glycerol, 0.5% BSA and 0.02% sodium azide.
Source :	Rabbit
Dilution :	Western Blot: 1/500 - 1/2000. Immunohistochemistry: 1/100 - 1/300. ELISA: 1/20000. Not yet tested in other applications.
Purification :	The antibody was affinity-purified from rabbit antiserum by affinity-chromatography using epitope-specific immunogen.
Concentration :	1 mg/ml
Storage_stability :	-20°C/1 year
Msds :	MSDS_Antibody.pdf
Other_name :	ZFP36L2; BRF2; ERF2; RNF162C; TIS11D; Zinc finger protein 36; C3H1 type-like 2; ZFP36-like 2; Butyrate response factor 2; EGF-response factor 2; ERF-2; Protein TIS11D
Molecular Weight :	40KD

Product Images



Western Blot analysis of various cells using TIS11D Polyclonal Antibody. Secondary antibody was diluted at 1:20000